

Taurus Holidays



2024
Holidays
by Coach



For bookings call: **01536 791066**

www.taurusholidays.co.uk



Taurus Holidays

Isham Road, Pytchley, Kettering, Northants, NN14 1EW

Tel: 01536 791066 Email: taurus@rbtravel.co.uk Web: www.taurusholidays.co.uk



About Us We are a medium sized local company with almost 60 years experience in the coach industry, and operate in the Northamptonshire area. We specialise in a wide range of coach travel from holidays and short breaks to day excursions and special occasions. We also cater for groups,

which can be tailored to your requirements. Whether you're a seasoned traveller or a new friend yet to meet. Our aim is to provide our customers with commitment to quality, service and with a friendly smile.

Vehicles Our Fleet of 15 clean and tidy vehicles consist of 70 (for schools), 55, 53, 49, 48 seater coaches with air con, seat belts, radio and PA/video. Most of our coaches have hot and cold drinks facilities, WC and washroom, all come with reclining seats. Some are with CCTV inside and out. All coaches are NON-SMOKING. Our own skilled workshop engineers maintain all coaches.

In the unlikely event of a breakdown, we have vehicle's manufacturers back up.

RB Coach Travel Ltd is a member of the CPT (Confederation of Passenger Transport) & CTA (Coach Tourism Association).

Groups All types of groups are catered for, from day trips to holidays, which can be tailored to suit your needs. We can also put an itinerary together for you, with places you would like to visit. Nothing is impossible.

Courier & Guides Our Tour Managers are highly trained professionals dedicated to ensuring that your holiday runs smoothly and efficiently at all times. With expert local knowledge, helpful enthusiasm and practical efficiency of your courier can be relied upon to make your arrangements go like clockwork and your holiday go with a swing. There will either be a courier throughout, local guides on excursions or an experienced driver/guide to look after you.

Insurance Travel insurance is needed for your peace of mind, and information can be obtained on booking for each tour. Insurance should be arranged at the time of booking.

If you already have your own travel insurance, please let us know.

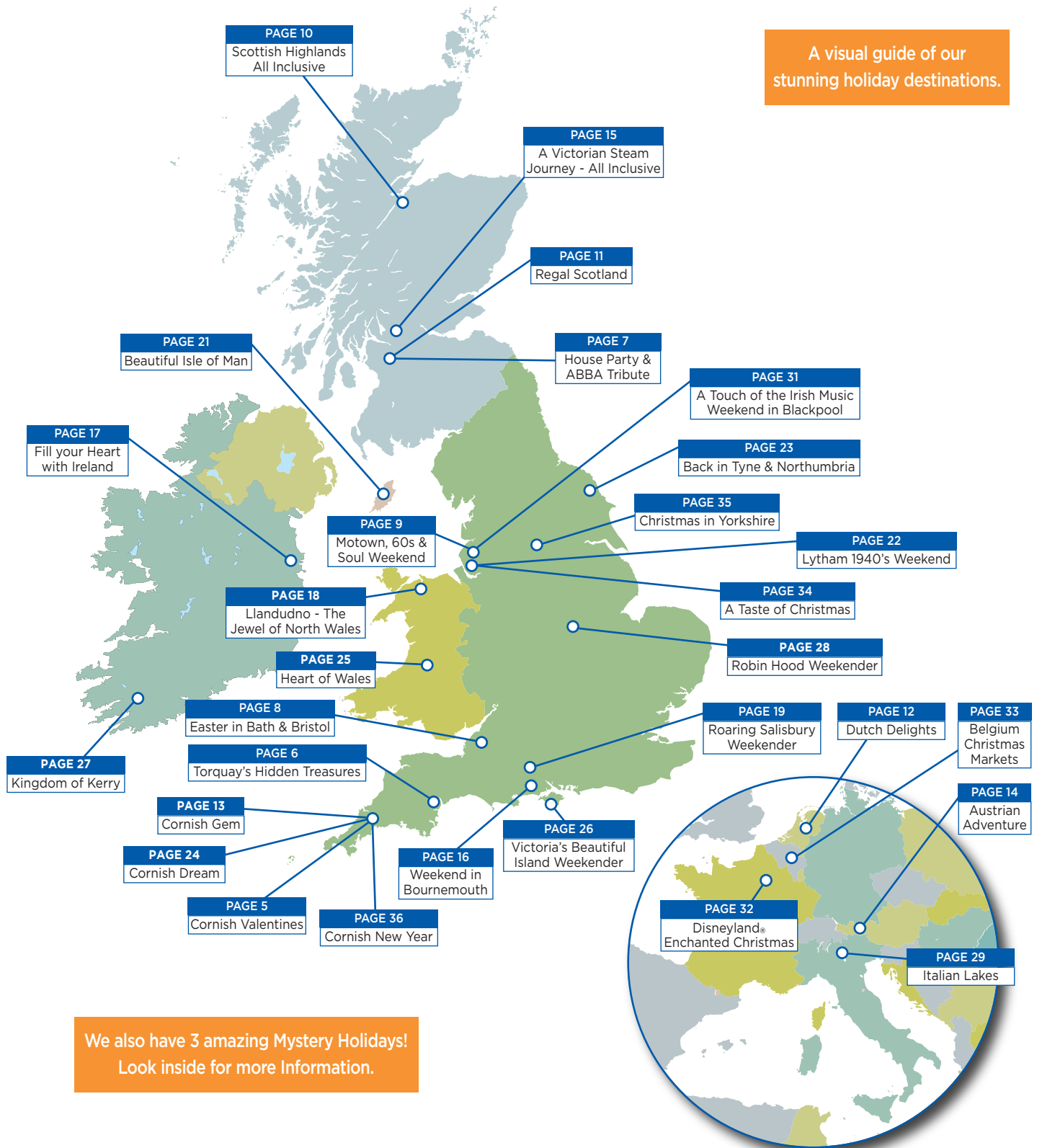
Financial Security Statement The combination of travel services offered to you is a package with the meaning of the Package Travel and Linked Travel Arrangements Regulations 2018. Therefore, you will benefit from all rights applying to packages; RB Coach Travel Ltd will be fully responsible for the proper performance of the package as a whole. Additionally, as required by law, RB Coach Travel Ltd have protection in place to refund your payment and, where transport is included in the package, to ensure your repatriation in the event that they become insolvent. RB Coach Travel Ltd (Trading as Taurus Holidays) are members of the Bonded Coach Holiday Group, overseen by The Association of Bonded Travel Organisers Trust Ltd. This is a government approved consumer protection scheme. This ensures that in relation to the coach package holidays described in this brochure (or website) that a Bond, which may be called upon in the unlikely event of the members insolvency, protects the clients monies. Clients are recommended to inspect the current membership certificate at our registered office or alternatively go to <https://www.abtot.com/bch-abtot-members-directory/> or telephone 0207 7065 5316 to confirm current membership. Your attention is also drawn to the Bonded Coach Holiday Group Trading Charter that will apply to these coach package holidays. Details of the Package Travel and Linked Travel Arrangements Regulations 2018 can be found at The Package Travel and Linked Travel Arrangements Regulations 2018 (legislation.gov.uk).



CONTENTS

DATE	DAYS	DESTINATION	PAGE	DATE	DAYS	DESTINATION	PAGE
ENGLAND				SCOTLAND			
22-26 Jan	5	Winter Mystery	4	18-22 Mar	5	House Party & ABBA Tribute	7
12-16 Feb	5	A Cornish Valentines	5	13-19 Apr	7	Scottish Highlands All Inclusive	10
11-15 Mar	5	Torquay's Hidden Treasures	6	24-28 Apr	5	Regal Scotland	11
29 Mar-1 Apr	4	Easter in Bath & Bristol	8	31 May-4 Jun	5	A Victorian Steam Journey All Inclusive	15
12-14 Apr	3	Motown, 60's & Soul Weekend	9	IRELAND			
10-15 May	6	A Cornish Gem	13	15-21 Jun	7	Fill your Heart with Ireland	17
7-10 Jun	4	A Weekend in Bournemouth	16	29 Sept-5 Oct	7	Kingdom of Kerry	27
5-8 Jul	4	Roaring Salisbury Weekender	19	WALES			
29 Jul-2 Aug	5	Summer Mystery	20	24-28 Jun	5	Llandudno - The Jewel of North Wales	18
16-19 Aug	4	Lytham 1940's Weekend	22	15-19 Sept	5	Heart of Wales	25
19-23 Aug	5	Back in Tyne & Northumbria	23	ISLE OF MAN			
1-5 Sept	5	A Cornish Dream	24	8-13 Aug	6	Beautiful Isle of Man	21
20-23 Sept	4	Victoria's Beautiful Island Weekender	26	EUROPE			
11-14 Oct	4	Robin Hood Weekender	28	29 Apr-3 May	5	Dutch Delights	12
21-25 Oct	5	Autumn Mystery	30	25 May-2 Jun	9	Austrian Adventure	14
8-10 Nov	3	A Touch of the Irish Music Weekend in Blackpool	31	13-21 Oct	9	Italian Lakes - The Ultimate Collection	29
2-6 Dec	5	A Taste of Christmas	34	24-27 Nov	4	A Disneyland Enchanted Christmas	32
23-27 Dec	5	Christmas in Yorkshire	35	29 Nov-2 Dec	4	Belgium Christmas Markets	33
30 Dec-2 Jan	4	A Cornish New Year	36				

A visual guide of our
stunning holiday destinations.



We also have 3 amazing Mystery Holidays!
Look inside for more Information.

Holiday Pick up Points

Northamptonshire

Local Area Door – to – Door Pick Ups

Outside of local area may incur an additional charge

Continental Tours

Essex Thurrock - Motorway Services

Kent Medway - Motorway Services

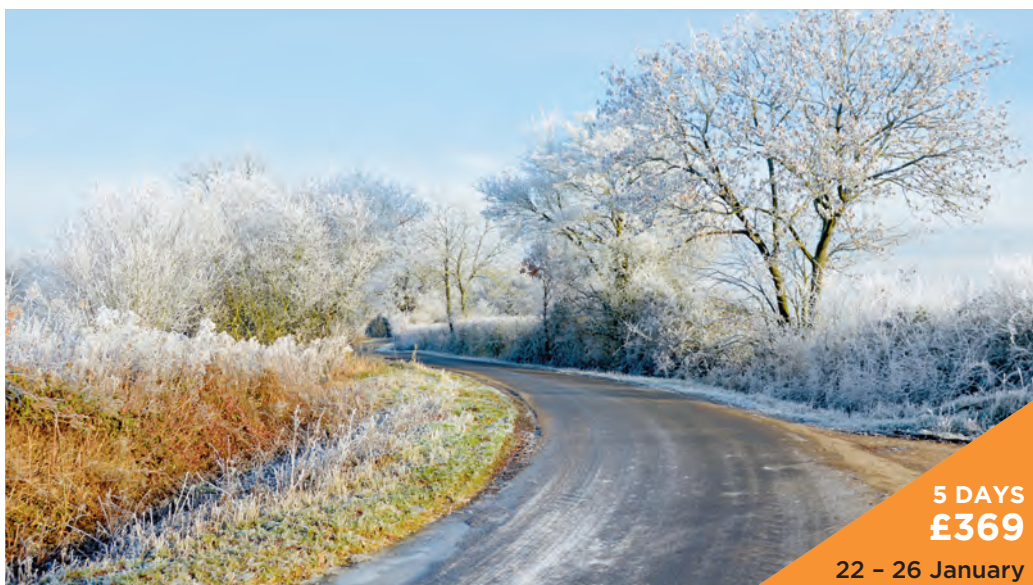
Dover - Ferry Terminal or Euro Tunnel

Stuck for present ideas this year?

Our gift vouchers make a great gift and are available in denominations of **£5, £10 & £20**.

Pick some up from the Taurus Office.





**5 DAYS
£369**

22 - 26 January

Winter Mystery

YOUR HOTEL - MYSTERY HOTEL

The hotels we use are all well-known and comfortable. All rooms are very comfortable and are en-suite with TV, tea/coffee making facilities. The hotels will look after your every need. The staff are polite and friendly. The hotel also has a bar, lounge and restaurant.

YOUR HOLIDAY CENTRE

Our "Mystery Tour" is very popular, so early booking is essential to avoid disappointment. Our destinations are always a pleasant surprise. These tours represent excellent value for money and accommodation will be of a very high standard. If you haven't yet joined us for a Mystery Tour, then it's time to get on board! On the way to our chosen hotel we stop usually for morning refreshments and somewhere for lunch and arrive at our 'mystery' hotel in plenty of time before dinner. On days 2 - 4, after a leisurely breakfast and usually much discussion about what the day might have in store, we depart for a full day excursion. On the final day, we make our way home via another place of interest. A different experience every time. Could it be country or coastal? Will it be North, South, East or West? We do know you'll be delighted when you get there.

Day 1 - Depart Local Area

After boarding your luxury coach and departing your local area, you start your journey somewhere?

With comfort breaks on route, you should arrive at the chosen hotel somewhere. Here you will spend the next four nights with dinner, bed & breakfast.

Day 2 - 4 Excursions

The next few days have been tailor made for your enjoyment. Maybe market towns, sandy beaches, fishing harbours, moorland or cliffs. You may see some, all or none of these on your excursions, but you will enjoy them. If there are any entrances, these will be included.

Day 5 - Return Home

After a satisfying breakfast and your cases have been collected, put back on the coach you depart for home. The return journey will take you a different way home. With comfort stops en-route you should arrive at your local pick up point by late afternoon, early evening.

Your driver/guide will do their professional best to ensure that you enjoy this tour. It will be at their discretion to rearrange the itinerary to better the tour for your comfort.

SPECIAL NOTES

- Insurance.
- Please inform us of any special dietary needs e.g.: Diabetic, gluten free, vegetarian etc.
- Special requests are put forward to the hotel, and they will do their utmost to accommodate your needs.
- Itinerary could be subject to change.

TOUR INCLUSIONS

- ✓ All coach travel
- ✓ 4 nights half board
- ✓ Drinks package
- ✓ Included excursions
- ✓ Courier escorted

TOUR INFORMATION

Duration: **5 Days**
 Departure: **Monday**
 Dates: **22 - 26 January**
 Meals: **Half board**
 Included excursions

TOUR PRICE

Price per person

£369.00

Single room supplement

£Nil



© Pixabay - Kunphotographer





5 DAYS
£369

12 - 16 February

A Cornish Valentines

YOUR HOTEL - ROSEMUNDY HOUSE HOTEL



Rosemundy House Hotel, St Agnes, Cornwall, TR5 0UF
Tel: 01872 552101

The hotel has been a favourite of ours since we first visited in the year 2000. This very private hotel has been family run for years and has a very relaxing and comfortable air about it. Beautiful quiet lounges for relaxing, superb Tom Noggi Restaurant with excellent cuisine, well equipped comfortable bedrooms with bath or shower. Set in its own grounds in the centre of St. Agnes. The village is set back from the cliffs by ¾ mile; Trevaunance Cove

is the nearest thing to a sheltered harbour that this inhospitable coast affords. Strewn with old mine workings, copper and tin ore were once shipped from the cove.

HOLIDAY CENTRE

Tucked into a stunning and unspoilt spot on the coast, St. Agnes sits in both a designated Area of Outstanding Natural Beauty and a World Heritage Site. St. Agnes is a picturesque village on the north coast of Cornwall. Steeped in mining history, the village retains a traditional friendly Cornish atmosphere and makes a wonderful base for a holiday, with four different beaches. There are dramatic coastal walks and breathtaking scenery filled with relics from the past, including the iconic Wheal Coates engine house. You will discover a thriving community with a choice of shops as well as galleries and craft workshops where beautiful gifts are made by hand. Sample the beautiful scenic coastline, fantastic beaches, arts and craft shops and mining heritage.

Day 1 - Depart Local Area

After boarding your luxury coach, your holiday has now started. You start your journey by travelling westward with stops en-route for lunch. Continuing your journey through beautiful countryside, to the Cornish town of St. Agnes and the Rosemundy House Hotel where you shall spend the next 4 nights with dinner, bed and breakfast. A sherry reception will be held just before dinner.

Day 2 - Falmouth & Seal Sanctuary

After breakfast your journey takes you first to Falmouth. It's known for its deep natural harbour on the Fal Estuary. Shipping from all over the world use the harbour, which is the largest in the country and includes a dry dock capable of handling tankers of up to 90,000 tons. It became a station for the Mail Packet Service in 1688, and by 1827 had 39 overseas-mail vessels. The National Maritime Museum Cornwall has interactive galleries and a flotilla of model boats. On Pendennis Point, Pendennis Castle

is a well-preserved 16th-century fortress built by Henry VIII. This afternoon we visit the Cornish Seal Sanctuary in Gweek (included). The Cornish Seal Sanctuary rescues numerous pups every year. With a self guided tour you will be able to follow the journey of their injured seal pups through their rescue from local coastal waters, through rehabilitation and eventually release back into the wild. There will also be a cream tea provided for you to enjoy.

Day 3 - Polperro & Fowey

Leaving after breakfast you travel to the beautiful and scenic villages of Polperro and Fowey along the Cornish coast. In Polperro it is easy to step back in time in what is a largely unspoilt fishing village. Pretty cottages cling to the steep hillsides around a small harbour, beloved by artists over the years. The River Pol runs through Polperro creating its idyllic appearance as well as the tightly packed ancient fishermen's houses which survive almost

untouched, its quaint harbour and attractive coastline. We then head to Fowey, tucked away on the picturesque coast, a small historic town filled with narrow streets clustered around the harbour inlet. The town is located at the mouth of the River Fowey before running into the English Channel. The River Fowey is the centre of this traditional town creating the beautiful landscape. We will then return to the hotel to relax before dinner.

Day 4 - Bodmin Jail ½ Day

This morning you will take a trip to Bodmin Jail (included). As with most old prisons, Bodmin Jail has a dark history. 55 executions took place within its formidable walls for crimes such as rape, murder and stealing. Eight of these were women. You can immerse yourself in Cornwall's Dark History in the new 'Dark Walk' with state of the art theatrical effects that bring some of the grimmest stories vividly to life. There is also a cafe and shop on site. You will then return back

SPECIAL NOTES

- Insurance.
- Please inform us of any special dietary needs e.g.: - Diabetic, gluten free, vegetarian etc.
- Special requests are put forward to the hotel, and they will do their utmost to accommodate your needs.
- Itinerary could be subject to change.

TOUR INCLUSIONS

- ✓ 4 nights half board
- ✓ Excursions
- ✓ Entrance to Seal Sanctuary plus cream tea
- ✓ Bodmin Jail
- ✓ Sherry reception on first night
- ✓ Entertainment on 2 nights
- ✓ Hotel cream tea
- ✓ Glass of wine on last night
- ✓ Red rose for the ladies
- ✓ Courier escorted

TOUR INFORMATION

Duration: **5 Days**
Departure: **Monday**
Dates: **12 - 16 February**
Meals: **Half board**
Included excursions

TOUR PRICE

Price per person

£369.00

Single room supplement

£Nil

to the hotel for a Cornish cream tea, (jam first then cream).

Day 5 - Depart for Home

After a hearty breakfast and cases have been loaded onto the coach, it is time to say farewell to your hosts at the Rosemundy House Hotel. Retracing your steps, with comfort stops en-route. You will arrive in your local area, late afternoon early evening.

Your driver/guide will do their professional best to ensure that you enjoy this tour. It will be at their discretion to rearrange the itinerary to better the tour for your comfort.





5 DAYS
£399

11 - 15 March

Torquay's Hidden Treasures

YOUR HOTEL - THE CARLTON HOTEL



Carlton Hotel, Falkland Road, Torquay, Devon. TQ2 5HS
Tel: 01803 400300

The TLH Carlton Hotel is a lovely 3 star hotel and Spa (TLH Leisure Resort) close to the sea front and town centre. It has outstanding on-site leisure and entertainment facilities include The Aztec Spa, a leisure complex, indoor and outdoor swimming pools, a gym, fitness studio, and bistro and games arena with entertainment on site. The stylish TLH Carlton Hotel prides

itself on a warm, welcoming atmosphere and impressive panoramic views across Torbay. There are 70 en-suite bedrooms all with TV, tea/coffee making facilities, and free Wi-Fi in all rooms. The Carlton Hotel's friendly restaurant offers buffet style breakfasts, including full English or continental choices. Look forward to the tempting table d'hôte evening meals with an additional a la carte selection. In the Riviera Lounge Bar you can enjoy some of the best views across the Bay in this lovely south-facing lounge. Overlooking the Aztec Bistro terrace and outdoor pools, the Riviera Lounge is also the perfect spot to enjoy a bit of peace and quiet, whilst enjoying the views and maintaining your connection to the rest of the resort.

HOLIDAY CENTRE

Torquay is a seaside town located in Devon and is part of the stunning English Riviera. One of the UK's top holiday destinations since the Victorian times. Torquay has always been popular with tourists of all ages. The iconic palm trees, busy harbour and international marina create this beautiful town. There are 22 miles of coastline, cliffs, coves, beaches and walks with a climate that belongs much further south. Stunning views go out over the English Channel from all across Torquay. The waterfront is the focus of life in the town where you will find the palm-lined promenade, seafront gardens and lively harbour.

Day 1 - Depart Local Area

After boarding your luxury coach, we make our way south to Torquay, with comfort stops en-route. We arrive at the Carlton Hotel, your home for the next 4 nights. Time to settle in and explore the hotel complex before dinner. Entertainment in the Starlight room.

Day 2 - Bygones & Tour of Kents Cavern

This morning our journey takes us to Bygones, this is three floors of pure nostalgia! Wander back in time, visit their authentic life-size Victorian Street, smell the treats of the Sweetshop. As you meander up to the top floor, hop on the 27-ton steam engine en-route! Arrive in the 20th Century; take a break in their station café for a range of cakes and refreshments. Marvel over their completely refurbished model railway themed around English villages in WWI and WWII. Consider your

ancestors in a WWI trench or taking cover in a WWII Anderson Shelter. Don't miss the 1950's and 60's shopping arcade filled with post-war packaging and household items. Later, on to the Kents Cavern. It is a spectacular natural cave, one of the most important Stone Age sites in Britain and Europe, with an incredible history. On your visit you will go back to a time when the cave was home to ancient humans, sheltering from extreme weather, making fires, shaping tools and hunting Ice Age animals. As you walk through the extensive labyrinth of caverns with your guide, you will be surrounded by 400 million year old rocks and spectacular stalagmites and stalactites. After your tour you can relax in their cafe. There are also woodland walks to explore with gravel paths. (All included) Later we return back to the hotel.

Day 3 - Day at Leisure

Today you have a free day to explore Torquay with its beautiful harbour, old pubs and many shops and museums or just enjoy the facilities at the hotel.

Day 4 - Lukesland Gardens & Buckfast Abbey

Lukesland is a 24-acre family-run garden in Dartmoor National Park, Set in the picturesque valley of the Addiccombe Brook. Lukesland is well-loved for its wonderful range of spring and autumn flowering shrubs and specimen trees, some dating from Victorian times. In the middle ages, tin streamers worked the valley that is now the site of Lukesland Gardens. Over the last seventy-five years the Howell family who now live there have greatly improved the gardens, changing them from dark Victorian laurel groves to bright displays of flowering shrubs. Clear waters of the stream cascading over waterfalls, numerous islands and bridges which

SPECIAL NOTES

- Insurance.
- Please inform us of any special dietary needs e.g.: Diabetic, gluten free, vegetarian etc.
- Special requests are put forward to the hotel, and they will do their utmost to accommodate your needs.
- All rooms have tea/coffee making facilities.

TOUR INCLUSIONS

- ✓ All coach travel
- ✓ 4 nights half board
- ✓ Excursions & entrances
- ✓ Entertainment
- ✓ Courier escorted

TOUR INFORMATION

Duration: **5 Days**

Departure: **Monday**

Dates: **11 - 15 March**

Meals: **Half board**

Included excursions

TOUR PRICE

Price per person

£399.00

Single room supplement

£Nil (5 rooms only)



make it great fun for all age groups to explore. After lunch we travel a short distance to Buckfast Abbey located on the edge of Dartmoor National Park. It is home to a community of Benedictine Monks who live their lives of prayer. Today, their site includes beautiful, spacious gardens, restaurants, and a Visitors Welcome Centre. (All included)

Day 5 - Depart for Home

After breakfast and cases have been loaded on to the coach, it is time to wave goodbye to our hosts at The Carlton Hotel and head for home. There will be comfort stops en-route, and you should be back in your local area by late afternoon, early evening.

Your driver/guide will do their professional best to ensure that you enjoy this tour. It will be at their discretion to rearrange the itinerary to better the tour for your comfort.



*Fernando
Thank You
For The Music
Take A Chance On Me
Mamma Mia Voulez Vous
Waterloo Does Your Mother Know
Knowing Me, Super Trouper
Knowing You Fernando
Dancing Queen
Voulez Vous*

**5 DAYS
£479**
18 - 22 March

House Party & ABBA Tribute - All Inclusive

YOUR HOTEL - THE WINNOCK HOTEL



The Winnock Hotel, The Square, Drymen, Glasgow, G63 0BL.

Tel: 01360 660245

The Winnock Hotel is a beautifully, traditional family run hotel overlooking the village green. The cosy log fires will help you to relax after a long day of exploring the beautiful surrounding countryside. The 74 comfortable en-suite rooms are all well equipped with hairdryer, TV and tea and coffee making facilities. There is no lift but ground floor rooms are available. The Merlin restaurant provides a more intimate setting for dinner complementing the hotel's historic ambience. For a more relaxed dinner the Capercaille room serves excellent Scottish cuisine and has a traditional bar area with an extensive selection of ales, spirits and wines and a speciality of over 70 malt whiskeys.

HOLIDAY CENTRE

Drymen is an attractive village located in the beautiful Loch Lomond and Trossachs National Park. The park consists of 40 mountains ranging from 2500ft to over 3000ft, 22 lochs, 50 rivers and two forest parks, The Argyll Forest Park and the Queen Elizabeth Forest Park. The Campsie Fells hills are to the west of Drymen. A range of volcanic hills which hosts a variety of farmland, open moors, steep-flanked glens, attractive woodland and sparkling burns. The lovely village boasts spectacular views of Dumgoyne to the east and is just a short way from Loch Lomond to the west. It is the perfect base to explore Scotland with Stirling and Glasgow just a short drive away. With all the natural features it is no wonder hundreds of tourists flood through the park every year.

Day 1 - Depart Local Area

After boarding your luxury coach, we travel north with comfort stops en-route. Still heading north, we cross the border into Scotland and head to Drymen and the Winnock Hotel where we will spend the next 4 nights' all inclusive. On arrival we have a welcome drinks reception while our cases are taken up to our rooms. Evening dinner is a three course, three choice menu. A glass of wine/beer or soft drink at dinner each night, plus tea and coffee. Free bar from 7.30pm - 10.30pm.

Day 2 - Loch Lomond & Inveraray

Today we explore the other side of Loch Lomond and take the breathtaking route over the 'Rest and be Thankful' to the Royal Burgh of Inveraray. Here you can explore or take an optional visit to Inveraray Castle. Today a packed lunch has been provided. Later we return back to the hotel. This evening there is a Scottish Show with Bagpipes, Haggis and Highland dancing.

Day 3 - Stirling Castle

After breakfast, we set off for Stirling Castle. (Entrance included). Stirling Castle is one of Scotland's most historically important sites and was once a favoured residence of the Stewart kings and queens who held grand celebrations at the castle.

Day 4 - Glasgow Transport Museum

Today we visit the beautiful city of Glasgow. Commonly mistaken for the capital of Scotland, Glasgow is the largest city in the country, situated right on the River Clyde. The Museum of Transport is a multi-award winning museum located on the banks of the River Clyde, with over 3000 objects on display from Glasgow's rich past. You can even walk down an old cobbled Glasgow street with shops dating from 1895 to the 1980s. We return to Balloch and the Loch Lomond shores shopping complex for a little retail therapy before returning back to the hotel.

Day 5 - Depart for Home

After all the suitcases have been packed and loaded onto the coach we leave our hosts at the Winnock Hotel and head for home. With comfort stops on the way, we arrive back at your local area early evening.

Your driver/guide will do their professional best to ensure that you enjoy this tour. It will be at their discretion to rearrange the itinerary to better the tour for your comfort.



SPECIAL NOTES

- Insurance.
- Please inform us of any special dietary needs e.g.: Diabetic, gluten free, vegetarian etc.
- Special requests are put forward to the hotel and they will do their utmost to accommodate your needs.
- There are tea/coffee facilities in the rooms.
- Itinerary could be subject to change.

TOUR INCLUSIONS

- ✓ All coach travel
- ✓ 4 nights full board
- ✓ Free bar 7.30 - 10.30pm
- ✓ Portage
- ✓ Entertainment each evening including Abba Tribute
- ✓ Included excursions
- ✓ Packed lunches
- ✓ Courier escorted

TOUR INFORMATION

Duration: **5 Days**

Departure: **Monday**

Dates: **18 - 22 March**

Meals: **Full board**

Included excursions

TOUR PRICE

Price per person

£479.00

Single room supplement

£76.00





4 DAYS
£439

29 March – 1 April

Easter in Bath & Bristol

YOUR HOTEL - MERCURE BRISTOL GRAND HOTEL



Mercure Bristol Grand Hotel, Broad Street, BS1 2EL Bristol
Tel: 0117 929 1645

The 4* Mercure Bristol Grand Hotel is set in a historic grade II listed building in the heart of Bristol city centre. The property's interior draws inspiration from the city's independent art scene and includes over 500 pieces by local artists. The 186-rooms at Mercure Bristol Grand Hotel are all en-suite with flat screen TV, tea/coffee making facilities, hairdryer, iron and ironing board and complimentary Wi-Fi, safe deposit box and air-conditioning. Keepers Kitchen & Bar which offers a twist on traditional British cuisine and Keepers bar has comfy seating and working space and an extensive drinks menu.

HOLIDAY CENTRE

Bristol was the first British city to be named European Green Capital. Bristol's modern economy is built on the creative media, technology, electronics and aerospace industries. If ever there was a city with a story to tell, it's Bristol. Enveloped in the hills of South West England, it has developed an unmistakable identity and fiercely independent spirit, forged by its passionate locals. The city straddling the River Avon with a prosperous maritime history. Its former city-centre port is now a cultural hub, the Harbour side, where the M Shed museum explores local social and industrial heritage. The harbour's 19th-century warehouses now contain restaurants, shops and cultural institutions such as contemporary art gallery The Arnolfini.

Day 1 - Depart for Bristol

After all local pickups are completed; you start your journey south west to Bristol. There will be comfort stops en-route. When you arrive at the Mercure Bristol Grand Hotel, there will be portage to take your cases to your rooms. This will be home for the next three nights.

Day 2 - Bath

Discover what makes Bath such a unique place. With stunning architecture drenched in rich history and cobblestone streets and the UK's only spa heated by natural springs. The city of Bath was founded by the Romans in AD 43 and is home to the famous Roman Baths, built around 70 AD, which are still in use today. Bath is also a UNESCO World Heritage Site, thanks to its well-preserved Georgian architecture, including the iconic Royal Crescent and Bath Abbey. World Heritage Centre will give you more information on the amazing history and heritage of Bath. The Centre is free to enter and features displays designed to inspire, excite and inform.

Day 3 - Harbour Tour & Aerospace Bristol

After breakfast there will be a boat tour of Bristol's floating harbour with commentary given on board. See the sights from a different angle. This afternoon you will travel to the Aerospace Museum. Journey through 100 years of Aviation History, step aboard the last Concord and see the

Conservation in Action Workshop. This is a super museum with lots of things to see and do. Later, return back to your hotel to relax before dinner.

Day 4 - Depart for home

After breakfast and cases have all been loaded onto the coach, you bid farewell to your hosts at the hotel. Travelling back, there will be comfort stops on the way before reaching your boarding points.

Your driver/guide will do their professional best to ensure that you enjoy this tour. It will be at their discretion to rearrange the itinerary to better the tour for your comfort.



SPECIAL NOTES

- Insurance/Bring your bus pass
- Please inform us of any special dietary needs e.g.: Diabetic, gluten free, vegetarian etc.
- Special requests are put forward to the hotel, and they will do their utmost to accommodate your needs.
- All rooms have tea/coffee making facilities.
- Itinerary could be subject to change.

TOUR INCLUSIONS

- ✓ All coach travel
- ✓ 3 nights half board
- ✓ Excursions
- ✓ Entrances
- ✓ Courier escorted

TOUR INFORMATION

Duration: **4 Days**

Departure: **Friday**

Dates: **29 Mar – 1 Apr**

Meals: **Half board**

Included excursions

TOUR PRICE

Price per person

£439.00

Single room supplement

£100.00 (Dbl/Tw for single Occupancy)



© Flickr Matt Buck



**3 DAYS
£299**

12 - 14 April

Motown, 60s & Soul Weekend

YOUR HOTEL - THE GRAND HOTEL



The Grand Hotel, North Promenade Sea Front, Blackpool, FY1 2JQ
Tel: 0871 222 7768

Formerly the Blackpool Hilton Hotel, the Grand Hotel Blackpool is perfect for a family holiday or a weekend break for couples and offers beautiful views and easy access to popular local attractions such as Blackpool Pleasure Beach. Set on Blackpool's promenade, 1 mile from Blackpool Tower. The Grand Hotel has an indoor pool and modern gym. Take advantage of their health club sauna. (Charges apply) Soak in the stunning sea views of Blackpool from the comfort of their Promenade Restaurant. Their Lounge Bar is the perfect place to meet up before dinner or enjoy a cheeky drink. All rooms have modern facilities, en-suite bathroom, hairdryer, TV, tea/coffee making facilities, and free Wi-Fi.

HOLIDAY CENTRE

Hailed as one of the UK's favourite seaside resorts, Blackpool is the perfect destination for all the family. Stroll along the promenade whilst tucking into traditional fish & chips, build sandcastles on the resort's expansive beaches or relax in your deckchair whilst the waves lap against the sand. If you're looking for more of an adrenaline rush, why not visit the iconic Blackpool Tower and see the famous Blackpool Promenade below. On a clear day you can see as far as the Lake District and Liverpool. If you've got the need for speed, venture to Blackpool Pleasure Beach, home to an array of thrilling rides and rollercoaster's like The Big One, which at a nail-biting 235ft, is the UK's tallest rollercoaster!

Day 1 - Depart Local Area

After leaving our local area, we travel direct to Blackpool with comfort stops on the way. Arriving at the Grand Hotel, with time to relax before dinner, and then prepare yourself for the forthcoming Musicales entertainment of bands and singers.

Day 2 - Day at Leisure

Today you have the opportunity of exploring Blackpool by shopping, trying out the thrills and spill of the Pleasure Beach, going up Blackpool Tower and more. This afternoon there will be more Motown 60s or Soul music back at the hotel. After dinner there is even more terrific music to enjoy.

Day 3 - Depart for Home

After a traditional farewell breakfast and cases have been loaded, you say farewell to your hosts at the Grand Hotel and return home via the Peak District arriving back to your local area late afternoon early evening.

Your driver/guide will do their professional best to ensure that you enjoy this tour. It will be at their discretion to rearrange the itinerary to better the tour for your comfort.



SPECIAL NOTES

- Please inform us of any special dietary needs e.g.: Diabetic, gluten free, vegetarian etc.
- All rooms have tea & coffee making facilities
- Your request is put forward to the hotel, and they will do their utmost to accommodate your needs
- Itinerary could be subject to change

TOUR INCLUSIONS

- ✓ All coach travel
- ✓ 2 nights half board
- ✓ Entertainment
- ✓ Services of driver/guide

TOUR INFORMATION

Duration: **3 Days**

Departure: **Friday**

Dates: **12 - 14 April**

Meals: **Half board**

Included excursions

TOUR PRICE

Price per person

£299.00

Single room supplement

£60.00





7 DAYS
£699

13 - 19 April

Scottish Highlands All Inclusive

YOUR HOTEL - BEST WESTERN INVERNESS PALACE HOTEL & SPA



The Best Western Inverness Palace Hotel & Spa is a charming 3-star property in a stately 1890s Victorian mansion overlooking the River Ness. Set in a prime location in the centre of Inverness just 2 minutes' walk from Inverness Cathedral, and 10 minutes' walk from Inverness Castle. There are 88 well-appointed rooms, which come with free Wi-Fi, flat-screen TVs, and tea and coffee making facilities. All include: clock radio, climate control, in-room safe, and phone and fax machine. Iron/ironing boards as well as trouser press. Bathroom amenities include hairdryer, complimentary toiletries and shower/tub combination.

Hotel includes a cafeteria and a stylish restaurant offering a full Scottish breakfast buffet. There is also an indoor swimming pool. Guests can also enjoy the following spa/wellness facilities: sauna, steam room, spa tub.

Outward

IHG Hotel Holiday Inn Glasgow Airport
St. Andrews Drive, PA3 2TJ
Scotland

Tel: 01698 420525

Main

Palace Hotel
8 Ness Walk, Inverness IV3 5NG
Scotland

Tel: 01463 223243

Return

Barony Castle Hotel
Old Manse Rd, Peebles EH45 8QW
Scotland

Tel: 01721 730395

HOLIDAY CENTRE

Inverness is in the north of Scotland and one of the smallest cities, known as Scotland's "Highland Capital", it still however retains its market town feel, dating back to its early development. Today tourism is a very important part of the economy. One of the many joys of Inverness is the rich variety of places to visit and things to do both in and around the city. The city boasts a host of historic buildings, notably in the Old Town, which you can appreciate while you browse city shops from the Victorian Market to the new award-winning East Gate centre. Take a stroll to Inverness Castle, currently used as a courthouse, and St Andrew's Cathedral, which dominate the River Ness and one of the most beautiful riverside settings in Britain. Enjoy the fine circular walk from the castle along the river and through the Ness Islands where you can watch anglers casting long lines to leaping Atlantic salmon. You can even buy a daily ticket and try it for yourself. Above the city lies Craig Phadrig, once the stronghold of Pictish Kings, which offers interesting forest walks and magnificent views of the Moray Firth, home to a diverse range of wildlife including bottlenose dolphins which can even be seen from the city.

Day 1 - Depart Local Area

After boarding your luxury coach, we travel north with comfort stops en-route, to the Hotel Holiday Inn Glasgow Airport where we will spend our first night with dinner, bed & breakfast.

Day 2 - Inverness

After a good night's rest and a full Scottish breakfast we leave the hotel and head for Inverness. There will be interesting stops en-route. On arriving at the Palace Hotel, we settle in and relax before dinner. All drinks are included at the times advertised whilst at the Palace Hotel.

Day 3 - Jewel in the Crown of the Highlands

Today we head north to Dunrobin Castle, (included) the most northerly of Scotland's great houses. It is the largest

house in the Highlands, with 189 rooms and is one of Britain's oldest continuously inhabited houses, dating from the early 1300s, home to the Earls and later, the Dukes of Sutherland. The Castle, which resembles a French château with its towering conical spires, has seen the architectural influences of Scotland's own Sir Robert Lorimer along with Sir Charles Barry, who designed London's Houses of Parliament. The Castle was used as a naval hospital during the First World War and as a boys' boarding school from 1965 to 1972.

Day 4 - Day at Leisure

Today you have a free day to visit the sights in Inverness, to do shopping, explore or just chill and use the hotel leisure facilities. Hotel lunch will be included today.

Day 5 - Loch Ness & Boat Trip

Today we shall explore Loch Ness with a boat trip, maybe Nessy will put in an appearance. We shall board the boat at Fort Augustus for a 50 minute cruise. You will then have time to explore the little village of Fort Augustus which is on the south shore of Loch Ness, with its little shops and eateries, along with the Caledonian Canal and Loch chambers. Later we return to the hotel.

Day 6 - Depart for Peebles

After breakfast and cases have been loaded, it is time to say farewell to our hosts at the Palace Hotel, and start our journey south. There will be stops en-route. Arriving late afternoon at the Barony Castle hotel Peebles. This imposing 16th century Castle has evolved into a traditional welcoming hotel, and where we will spend our last

SPECIAL NOTES

- Insurance.
- Please inform us of any special dietary needs e.g.: Diabetic, gluten free, vegetarian etc.
- Special requests are put forward to the hotel and they will do their utmost to accommodate your needs.
- There are tea/coffee facilities in the rooms.
- Itinerary could be subject to change.

TOUR INCLUSIONS

- ✓ All coach travel
- ✓ 2 overnights half board
- ✓ 4 nights full board main hotel
- ✓ Excursions + entrances
- ✓ Entertainment
- ✓ Packed lunches
- ✓ Free bar 7pm - 10pm
- ✓ Wine at dinner
- ✓ Complimentary tea/coffee
- ✓ Leisure facilities

TOUR INFORMATION

Duration: **7 Days**

Departure: **Saturday**

Dates: **13 - 19 April**

Meals: **Full board at main hotel**

Included excursions & entrances

TOUR PRICE

Price per person

£699.00

Single room supplement

£165.00 DbI/Tw Room

for Sole Occupancy



overnight stay with dinner, bed & breakfast.

Day 7 - Depart for Home

After all the overnight luggage have been packed and loaded onto the coach we leave the Barony Castle Hotel and head for home. With comfort stops on the way, we arrive back at your local area early to late evening.

Your driver/guide will do their professional best to ensure that you enjoy this tour. It will be at their discretion to rearrange the itinerary to better the tour for your comfort.



© Royal Yacht Britannia - Marc Millar

5 DAYS
£549
24 - 28 April

Regal Scotland

YOUR HOTEL - THE WINNOCK HOTEL



The Winnock Hotel, The Square, Drymen, Glasgow, G63 0BL
 Tel: 01360 660245

The Winnock Hotel is a beautifully, traditional hotel overlooking the village green. The cosy log fires will help you to relax after a long day of exploring the beautiful surrounding countryside. The 74 comfortable en-suite rooms are all well equipped with hairdryer, TV and tea and coffee making facilities. There is no lift but ground floor rooms are available. The Merlin restaurant provides a more intimate setting for dinner complementing the hotel's historic ambience. For a more relaxed dinner the Capercaille room serves excellent Scottish cuisine and has a traditional bar area with an extensive selection of ales, spirits and wines and a speciality of over 70 malt whiskeys.

HOLIDAY CENTRE

Drymen is an attractive village located in the beautiful Loch Lomond and Trossachs National Park. The park consists of 40 mountains ranging from 2500ft to over 3000ft, 22 lochs, 50 rivers and two forest parks, The Argyll Forest Park and the Queen Elizabeth Forest Park. The Campsie Fells hills are to the west of Drymen. A range of volcanic hills which hosts a variety of farmland, open moors, steep-flanked glens, attractive woodland and sparkling burns. The lovely village boasts spectacular views of Dumgoyne to the east and is just a short way from Loch Lomond to the west. It is the perfect base to explore Scotland with Stirling and Glasgow just a short drive away. With all the natural features it is no wonder hundreds of tourists' flood through the park every year.

Day 1 - Depart Local Area

After boarding your luxury coach, we travel north with comfort stops en-route. Still heading north, we cross the border into Scotland and head to Drymen and the Winnock Hotel where we will spend the next 4 nights'. On arrival cases are taken up to our rooms. Evening dinner is a three course, three choice menu plus tea and coffee.

Day 2 - Edinburgh Royal Yacht Britannia & Botanic Gardens

After breakfast we head to Edinburgh, the capital of Scotland, located on the southern side of the Firth of Forth. Whilst in Edinburgh your first stop will be the Royal Yacht Britannia (entrance included). Discover what life was like on board the late Queen's floating Royal residence. You can follow in the footsteps of world leaders such as Sir Winston Churchill, Nelson Mandela and Rajiv Gandhi. After your visit you then go the famous Botanic Gardens. The Royal Botanic Gardens Edinburgh is one of the finest botanic gardens in

the world. The garden offers fantastic views of the capital's skyline, featuring Edinburgh Castle. Visitors can discover its fascinating history, which dates back 350 years, learn about its plantings and walk around 72 acres of beautiful, awe-inspiring landscape. Explore the world-famous Rock Garden or stroll amongst the magnificent Giant Redwood trees in the Woodland Garden.

Day 3 - Visit to Kilbryde Castle

Today we visit Kilbryde Castle which lies in southern Perthshire. It is a castellated Scottish castle in the Scots baronial style. You will explore the castle and have morning coffee and some home baking, and a walk around the castle grounds. Its extensive gardens are open to the public on selected days or by appointment. The property was originally built by the Earl of Menteith in 1460. It is currently owned by Sir James and Lady Carola Campbell. The family has owned the castle since 1659. The castle was the home of Sir J. Campbell Baronet in the

mid 19th century. The castle was remodelled by the Scottish architect Thomas Heiton to its current appearance in the late 1870s following the collapse of the roof in 1877. The building was refurbished again in the 1950s. The gardens are set among 15 acres of magnificent grounds, composed of both wild and formal gardens which are a haven for a wide variety of wildlife.

Day 4 - Cruise on Loch Katrine

This morning we visit Glengoyne Whiskey Distillery for a tour and tasting. Their Distillery Ambassadors will take you on the unhurried journey their spirit makes. Enjoy a tutored tasting of 2 Glengoyne Highland Single Malt Whiskeys as you learn about the bold, complex flavours from the slowest stills in Scotland matured in only the finest casks. This afternoon we enjoy a cruise on Loch Katrine, on the "Lady of the Lake" (included) with afternoon cream tea served onboard as you sail the Queen of the Scottish Lochs.

SPECIAL NOTES

- Insurance.
- Please inform us of any special dietary needs e.g.: Diabetic, gluten free, vegetarian etc.
- Special requests are put forward to the hotel and they will do their utmost to accommodate your needs.
- There are tea/coffee facilities in the rooms.
- Itinerary could be subject to change.

TOUR INCLUSIONS

- ✓ All coach travel
- ✓ 4 nights full board
- ✓ Free bar 7.30 - 10.30pm
- ✓ Portage
- ✓ Included excursions:
- ✓ Royal Yacht Britannia Cruise
- ✓ Entrances
- ✓ Packed lunches
- ✓ Courier escorted

TOUR INFORMATION

Duration: **5 Days**
 Departure: **Wednesday**
 Dates: **24 - 28 April**
 Meals: **Full board**
 Included excursions

TOUR PRICE

Price per person

£549.00

Single room supplement

£76.00



Courtesy Kilbryde Castle

Day 5 - Depart for Home

After all the suitcases have been packed and loaded onto the coach we leave our hosts at the Winnock Hotel and retrace our journey for home. With comfort stops on the way, we arrive back at your local area early evening.

Your driver/guide will do their professional best to ensure that you enjoy this tour. It will be at their discretion to rearrange the itinerary to better the tour for your comfort.


**5 DAYS
£569**
29 April – 3 May

Dutch Delights

YOUR HOTEL – KONTAKT DER KONTINENTEN



Kontakt der Kontinenten Hotel, Amersfoortse straat 20, Soesterberg, Netherlands
Tel: **+31 (0)346 351755**

The 3* Kontakt der Kontinenten hotel, a former mission house and monastery, is just 5 minutes on foot from the centre of Amersfoort. The hotel is light and airy with a great restaurant. Their internationally oriented kitchen offers excellent meals, also from the restaurant you have a direct view and access to the terrace and beautiful forest garden. There are 125 bedrooms all with en-suite, TV, telephone and

Wi-Fi. The lounge serves as the living room, where you can get a freshly brewed cup of coffee or tea for free throughout the day. There are lounge chairs and a large reading table where you can quietly read the newspaper or a magazine. Free internet via Wi-Fi is available everywhere. In the monastery Cenakel there is also a lounge with delicious coffee, newspapers and wireless internet. In the bar you can relax while enjoying a drink and a snack. In good weather you can stroll with a drink from the bar to the large terrace overlooking the forest.

HOLIDAY CENTRE

When you think about Holland, you probably envision windmills, clogs and tulips. Huge fields split up into strips filled with bright tulips, daffodils and hyacinths in the most wonderful colours. Enjoy them in springtime in the flower-bulb region around Leiden. When the flower bulbs are blooming, this may well be the most colourful region in the world. Amersfoort and its inner city have been preserved well since medieval times. Points of interest are Sint-Joriskerk (Saint George's church), the canal-system with its bridges, as well as medieval and other old buildings; many are designated as national monuments. During medieval times, Amersfoort was an important centre for the textile industry, and there were a large number of breweries.

Day 1 - Depart Local Area

After boarding your luxury coach, we depart our local area, to travel direct to Dover for our morning ferry to Calais. We travel through France and into Belgium and then the Netherlands, with comfort stops on route. Passing Utrecht we head for Amersfoort. We arrive at the 3* Kontakt der Kontinenten Hotel in Amersfoort, where we check-in and spend the next 3 nights with dinner, (3 course with choice of main) bed and buffet breakfast.

Day 2 - Keukenhof Gardens

One of the most spectacular gardens in the world can be found at Keukenhof. (Entrance included) Think of Keukenhof as an "amusement park for flowers". There are meandering paths, fields exploding with colour as millions of tulips are blooming, and the site has the requisite windmill or two, as well as a variety of exhibits. The number of bulb-growing companies taking part has now grown from 10 to more than 100,

but the Keukenhof's character remains unchanged: every year it exhibits the best and most beautiful flowers in the Netherlands. Keukenhof has become one of the best-known attractions in the country and one of the most photographed sights in the world. A design dating back to 1840. The majestic trees and the pond date back to that time. In the years following, the Keukenhof Estate was further developed into the present 32-hectare park. Areas of beautiful displays inside the many pavilions. Many places for relaxation and refreshments. After a colourful day we return back to the hotel to relax before dinner. Rest of evening at leisure.

Day 3 - Old Holland Tram & Boat

After breakfast we leave the hotel and head north to Hoorn where we will board the famous tram for our included journey through the Dutch countryside to Medemblik, this will include coffee and pastry served on board. On arrival

you have free time to explore the lovely town of Medemblik with its beautiful historic centre, before boarding the Museum Ship Friesland for your cruise to Enkhuizen. You will be sailing on what was once called the Zuiderzee. This picturesque town draws thousands of tourists every year. Some love Enkhuizen for its many historic buildings and monuments, others because of its harbour and excellent water sports facilities. From here we make our way back across the Houtridijk, a 27km dike, which separated the old Zuiderzee, now called the IJsselmeer, the largest inland lake in western Europe. From here we make our way to the mainland and back to the hotel.

Day 4 - Windmills-Cheese & Old Holland

Today we visit the windmill village of Zaanse Schans. An open air museum full of traditional fisherman houses and the old traditional style windmills. Visit

SPECIAL NOTES

- Currency for this tour in the Euro
- Full valid Passport
- Insurance.
- To phone back to England: +44 then leave off the zero of your STD code then the number.
- There are no tea/coffee making facilities in the rooms (please bring your own).
- Special requests are put forward to the hotel, and they will do their utmost to accommodate your needs.
- Itinerary could be subject to change.

TOUR INCLUSIONS

- ✓ All coach travel
- ✓ Ferries
- ✓ 4 nights half board
- ✓ Tourist tax
- ✓ Excursions
- ✓ Entrance to Keukenhof Gardens
- ✓ Train & boat ride
- ✓ Courier escorted

TOUR INFORMATION

Duration: **5 Days**

Departure: **Monday**

Dates: **29 April – 3 May**

Meals: **Half board**

Included excursions

TOUR PRICE

Price per person

£569.00

Single room supplement

£60.00

the cheese and clog houses, see how the cheese is made and even try a piece, and also see how clogs are made. You can also climb the different windmills. Continuing your journey to the picturesque fishing village of Volendam, where the locals wear the traditional national costume of Volendam. Try the local herring, Paling (eel) or the scrumptious pancakes. The little harbour bustling with fishing boats and a pleasure boat which can take you across to the little fisherman's island of Markham. After a great day, you return to the hotel for dinner.

Day 5 - Depart for Home

After breakfast and cases have been loaded onto the coach, we depart the hotel making our way back to the port and our afternoon ferry to Dover, to arrive home later this evening.

Your driver/guide will do their professional best to ensure that you enjoy this tour. It will be at their discretion to rearrange the itinerary to better the tour for your comfort.



6 DAYS
£549

10 - 15 May

A Cornish Gem

YOUR HOTEL - ROSEMUNDY HOUSE HOTEL



Rosemundy House Hotel, St. Agnes, Cornwall, TR5 0UF
Tel: 01872 552101

The hotel has been a favourite of ours since we first visited in the year 2000. This very private hotel has been family run for years and has a very relaxing and comfortable air about it. Beautiful quiet lounges for relaxing, superb Tom Noggi Restaurant with excellent cuisine, well equipped comfortable bedrooms with bath or shower. Set in its own grounds in the centre of

St. Agnes. The village is set back from the cliffs by ¾ mile; Trevaunance Cove is the nearest thing to a sheltered harbour that this inhospitable coast affords. Strewn with old mine workings, copper and tin ore were once shipped from the cove.

HOLIDAY CENTRE

Tucked into a stunning and unspoilt spot on the coast, St. Agnes sits in both a designated "Area of Outstanding Natural Beauty" and a "World Heritage Site". St. Agnes is a picturesque village on the north coast of Cornwall. Steeped in mining history, the village retains a traditional friendly Cornish atmosphere and makes a wonderful base for a holiday, with four different beaches. There are dramatic coastal walks and breathtaking scenery filled with relics from the past, including the iconic Wheal Coates engine house. You will discover a thriving community with a choice of shops as well as galleries and craft workshops where beautiful gifts are made by hand. Sample the beautiful scenic coastline, fantastic beaches, arts and craft shops and mining heritage.

Day 1 - Depart Local Area

After boarding your luxury coach, your holiday has now started. You start your journey by travelling westward with stops en-route for lunch. Continuing your journey through beautiful countryside, to the Cornish town of St. Agnes and the Rosemundy House Hotel where you shall spend the next 5 nights with dinner, bed and breakfast.

Day 2 - Port Isaac

Today we spend time on the north Cornish coast. We travel to Port Isaac, a traditional fishing village with a vibrant local community and home to the TV series Doc Martin starring Martin Clunes. It's a truly picturesque village with narrow winding streets lined with whitewashed cottages that head down to the harbour where you can watch local fishermen landing their daily catch of fish, crab and lobsters. (Its downhill from coach drop off point) From here we travel to the Healy's Cider Farm. Healy's is a working cider farm steeped in history,

which has been brewing award-winning ciders, wines, and fruit juices for over 25 years. We then return back to the hotel to relax before dinner.

Day 3 - Lands End

Lands End is mainland Britain's most south-westerly point and one of the country's most famous landmarks. From the 200 foot high granite cliffs that raise out of the Atlantic Ocean you can gaze across to the Longships Lighthouse, the Isles of Scilly twenty eight miles away and beyond that, North America. Returning via St. Ives. Until her death Barbara Hepworth was the leading light in a famous artist's community that lived and worked in this attractive and very popular fishing village. Quaint old houses and winding alleys cluster beneath the 120ft rough-hewn granite spire of the church, a fine building dating from 15th century. From here we return back to the hotel.

Day 4 - Eden Project

Today is a full day's visit to the Eden

Project. (Admission included). Millions have already visited this 35-acre crater overlooking St. Austell Bay, a phenomenal success. The awesome geodesic structures are the world's largest greenhouses, accommodating a fascinating array of plants from everywhere - tropics, rainforests, Oceania, the Mediterranean - and outside, whatever grows under the warm Cornish sun. And not to be overlooked is the Eden Project's role as a new scientific institute and forum for the 21st Century, a centre of communication, education and participation. After a great day out, we return to our hotel for our evening meal.

Day 5 - Bodmin Jail ½ Day

This morning you will take a trip to Bodmin Jail (included). As with most old prisons, Bodmin Jail has a dark history. 55 executions took place within its formidable walls for crimes such as rape, murder and theft. Eight of these were women. You can immerse yourself in Cornwall's dark history in the new 'Dark Walk' with

SPECIAL NOTES

- Insurance.
- Please inform us of any special dietary needs e.g.: Diabetic, gluten free, vegetarian etc.
- Special requests are put forward to the hotel, and they will do their utmost to accommodate your needs.
- Itinerary could be subject to change.

TOUR INCLUSIONS

- ✓ All coach travel
- ✓ 5 nights half board
- ✓ Excursions
- ✓ Entrances
- ✓ Courier escorted

TOUR INFORMATION

Duration: 6 Days
Departure: Friday
Dates: 10 - 15 May
Meals: Half board
Included excursions

TOUR PRICE

Price per person

£549.00

Single room supplement
£Nil



state of the art theatrical effects that bring some of the grimmest stories vividly to life. There is also a cafe and shop on site. You will then return back to the hotel.

Day 6 - Day of Departure

After a hearty breakfast and cases have been loaded onto the coach, it is time to say farewell to your hosts at the Rosemundy House Hotel. Retracing your steps, with comfort stops en-route. You will arrive in your local area late afternoon, early evening.

Your driver/guide will do their professional best to ensure that you enjoy this tour. It will be at their discretion to rearrange the itinerary to better the tour for your comfort.



Austrian Adventure

YOUR HOTELS - HOTEL BERGKRISTALL, IBIS LUXEMBOURG SUD

A superior traditional family run hotel with a feel good factor. The hotel is a 4 star. With a total of 75 rooms, spacious dining room and restaurant and an attractive wellness centre. The hotel offers a 4 course evening meal with menu choice and a fresh salad buffet every day. Many products used in the hotel kitchen are home produced on their own farm. All rooms are decorated in Tyrolean style with shower or bath, WC, telephone, flat screen satellite TV, hairdryer, cosmetic mirror and balcony. There are 2 lifts to all floors. The Wellness Centre includes an indoor swimming pool with massage jets, waterfall, whirl effect, sauna and steam bath.

Main Hotel: Hotel Bergkristall, A-6311 Oberau, Wildschönau-Mühltal 40, Austria **Tel: +43 (0) 53398917**

Outward & Return: IBIS LUXEMBOURG SUD, Rue de Turi, 3378 Livange, Luxembourg **Tel: +352 26 52 01**

HOLIDAY CENTRE

The Wildschönau Valley, which is located in the Kitzbüheler Alps, is home to a number of tiny and traditional Austrian resorts. This is an area that's relaxed, void of any crowds, much laid back and without any of the hustle and bustle of the bigger destinations. The Wildschönau lies at heights between 828 and 936 metres above sea level. A beautiful area of mountains, pastures and forest. Close to Wörgle in the Inn Valley, Innsbruck, Berchtesgaden and the Eagles Nest are all in easy reach.

Day 1 - Home/Luxembourg

After picking up in our local area, we drive to Dover for our morning, short ferry crossing to Dunkirk. We will be travelling across northern Europe, with stops en-route, as we make our way to Luxembourg for our first overnight with dinner, bed and breakfast at our selected hotel.

Day 2 - Arrive Mühltal

Departing after an early breakfast, we continue our journey through Germany heading towards southern Bavaria. By mid-afternoon we are approaching Austria to arrive in the picturesque hamlet of Mühltal. Here we shall spend the next 6 nights with dinner, bed and breakfast accommodation at the stunning 4* Hotel Bergkristall. You will be given a Wildschönau Card on arrival at hotel, to use on public transport and the chair lift for a mountain ride in the Wildschönau area.

Day 3 - A Day at Leisure

A day at leisure to enjoy the beautiful surroundings of your resort area and to make use of the hotel's swimming pool and leisure facilities. For those who like to walk, take the little Bummelzug (noddy train) to Kundle Klam, and then walk through the fantastic gorge with waterfalls. At the far end is the small town of Kundle, where you can get refreshed before

the walk back. (Weather permitting 6km approx 40 mins each way, wheelchair friendly, can be a little bumpy in parts).

Day 4 - Berchtesgaden and the Eagles Nest (Included)

Departing after breakfast, we take a drive through alpine country to the picturesque village of Berchtesgaden and the infamous "Eagles Nest", Hitler's mountain retreat during the Second World War. We ascend in special buses via the Kehlsteinstrasse, a uniquely daring feat of construction, along a series of hairpin bends and up the northwest face of the Kehlstein to the parking place. Finally, we take the actual lift that Hitler used, to ascend the 400 feet in 1.5 minutes to the Eagle's Nest. Enjoy the breathtaking panorama over the Königssee and Bavarian Alps or partake in some refreshment in the tearoom. This afternoon we return via the small town of Königssee, set on the shores of Lake Königssee. We then return to the hotel.

Day 5 - Tyrolean Tour

Departing after breakfast for a full day's scenic tour through some of the most picturesque villages you can imagine. This morning we visit the delightful medieval town of Rattenberg, founded in 1300s and once the home of Kings, and famous

for its crystal glass. With a population of 440, it is the smallest town in the country. We continue our journey by travelling over the Gerlos Pass to the Krimml Waterfalls where we stop for photographs, sightseeing and lunch. (Entrance at own expense). We continue through valleys and over passes to the famous town of Kitzbühl, where you will see the famous ski run high up on the Kitzbühelhorn. We have a break here before returning to our hotel passing picture postcard villages of Westendorf and Hopfgarted.

Day 6 - Wattens & Innsbruck

Departing after breakfast we head for Innsbruck, capital of the Tyrol. First we will visit the town of Wattens and the famous Swarovski Crystal Works, then onto Innsbruck, this historical capital is full of old world charm. The Royal Palace of Empress Maria Theresa, the Golden Roof, Cathedral and lots more. Time for shopping and sightseeing. Back to our hotel for dinner.

Day 7 - Day at Leisure

Today is our last day in resort, before our long drive back to Luxembourg. Enjoy the day with your Wildschönau Card or just relax, take a walk, visit the museums etc.

Day 8 - Austria/Luxembourg

After breakfast and cases have been

SPECIAL NOTES

- The currency you will need for this tour is the Euro.
- A Valid Passport.
- An EHIC card (European Health Insurance card).
- Insurance.
- To ring back to England you dial: - +44 then minus the 0 from your code, followed by your number.
- There are no tea or coffee making facilities in the hotel rooms. (Best bring your own)
- You will need 2 prong continental plugs to use any of your electrical devices.
- Your request is put forward to the hotel, and they will do their utmost to accommodate your needs.
- Please inform us of any special dietary needs e.g.: Diabetic, gluten free, vegetarian etc.
- Overnight luggage can be taken.

TOUR INCLUSIONS

- ✓ All coach travel
- ✓ Ferry
- ✓ 2 overnights Luxembourg HB
- ✓ 6 nights in Austria HB
- ✓ City tax
- ✓ Excursions & entrances
- ✓ Entertainment
- ✓ Wildschönau card
- ✓ Courier escorted

TOUR INFORMATION

Duration: **9 Days**

Departure: **Saturday**

Dates: **25 May - 2 June**

Meals: **Half board**

Included excursions

TOUR PRICE

Price per person

£959.00

Single room supplement

£156.00

loaded onto the coach, we bid farewell to the Bergkristall and make our way back through southern Germany to our chosen hotel in Luxembourg. Time to relax before dinner.

Day 9 - Luxembourg/Home

Departing after breakfast we head back to Dunkirk for our late afternoon ferry to Dover. Arriving home around mid to late evening.

Your driver/guide will do their professional best to ensure that you enjoy this tour. It will be at their discretion to rearrange the itinerary to better the tour for your comfort.



5 DAYS
£579

31 May – 4 June

A Victorian Steam Journey - All Inclusive

YOUR HOTEL - THE WINNOCK HOTEL



The Winnock Hotel, The Square, Drymen, Glasgow, G63 0BL
Tel: 01360 660245

The Winnock Hotel is a beautifully, traditional family run hotel overlooking the village green. The cosy log fires will help you to relax after a long day of exploring the beautiful surrounding countryside. The 74 comfortable en-suite rooms are all well equipped with hairdryer, TV and tea and coffee making facilities. There is no lift but ground floor rooms are available. The Merlin restaurant provides a more intimate setting for dinner complementing the hotels

historic ambience. For a more relaxed dinner the Capercaille room serves excellent Scottish cuisine and has a traditional bar area with an extensive selection of ales, spirits and wines and a speciality of over 70 malt whiskies. A pack lunch will be provided on three days.

HOLIDAY CENTRE

Drymen is an attractive village located in the beautiful Loch Lomond and Trossachs National Park. The park consists of 40 mountains ranging from 2500ft to over 3000ft, 22 lochs, 50 rivers and two forest parks, The Argyll Forest Park and the Queen Elizabeth Forest Park. The Campsie Fells hills are to the west of Drymen. A range of volcanic hills which hosts a variety of farmland, open moors, steep-flanked glens, attractive woodland and sparkling burns. The lovely village boasts spectacular views of Dumgoyne to the east and is just a short way from Loch Lomond to the west. It is the perfect base to explore Scotland with Stirling and Glasgow just a short drive away. With all the natural features it is no wonder hundreds of tourists flood through the park every year.

Day 1 - Depart Local Area

After boarding your luxury coach, we travel north with comfort stops on route. Still heading north, we cross the border into Scotland and head to Drymen and the Winnock Hotel where we will spend the next 4 nights' all inclusive. On arrival we have a welcome drinks reception while our cases are taken up to our rooms. Evening dinner is a three course, three choice menus, plus tea and coffee.

Day 2 - Falkirk Wheel & Steam Railway

After breakfast we visit the iconic Falkirk Wheel the world's only rotating boatlift which connects the Forth & Clyde and Union canals. It was constructed to replace a series of 19th century lock gates. Here you will have a boat trip on the wheel and the canal. The 50-minute journey lifts the boat up to join the Union Canal 35m above and sails smoothly from the Falkirk Wheel onto the Union Canal before returning to your starting point at the

Visitor Centre. Leaving on the coach from the Falkirk Wheel, we travel to Bo'Ness station for a round trip on the heritage Bo'Ness & Kinneil steam railway with a traditional afternoon cream tea served on board. The Museum of Scottish Railways is also included and there is a short walk over a footbridge or a 500m level walk from the station to the museum buildings. After a great day we return to Drymen and our hotel.

Day 3 - Glasgow's Museum of Transport & Loch Lomond

Today we visit the beautiful city of Glasgow. Commonly mistaken for the capital of Scotland, Glasgow is the largest city in the country, situated right on the River Clyde. The Museum of Transport is a multi-award winning museum located on the banks of the River Clyde, with over 3000 objects on display from Glasgow's rich past. You can even walk down an old cobbled Glasgow street with shops dating from 1895 to the 1980s. Later

we return to Loch Lomond for a 1hr cruise on the Loch. Afterwards we return back to Drymen and our hotel. (Packed lunch is provided).

Day 4 - Loch Katrine Steam Cruise

After breakfast we head into the Trossachs and the Queen Elizabeth Forest Park to enjoy 2 hour cruise on Loch Katrine on the steam ship SS Sir Walter Scott. Lunch at the Lochside restaurant on the harbour. We then retrace our steps back to the hotel.

Day 5 - Depart for Home

After all the suitcases have been packed and loaded onto the coach we leave our hosts at the Winnock Hotel and head for home. With comfort stops on the way, we arrive back at your local area early evening.

Your driver/guide will do their professional best to ensure that you enjoy this tour. It will be at their discretion to rearrange the itinerary to better the tour for your comfort.

SPECIAL NOTES

- Insurance.
- Please inform us of any special dietary needs e.g.: Diabetic, gluten free, vegetarian etc.
- Special requests are put forward to the hotel and they will do their utmost to accommodate your needs.
- There are tea/coffee facilities in the rooms.
- Itinerary could be subject to change.

TOUR INCLUSIONS

- ✓ All coach travel
- ✓ 4 nights half board
- ✓ Portage
- ✓ Entertainment on 2 evenings
- ✓ Drinks package included
- ✓ Included excursions:
- ✓ 2hr Cruise on Loch Katrine
- ✓ Lunch at Loch Side Restaurant
- ✓ Ride on Falkirk Wheel
- ✓ Bo'Ness and Kinneil Steam Railway with afternoon tea
- ✓ Packed lunches on days where lunch is not provided
- ✓ Courier escorted

TOUR INFORMATION

Duration: 5 Days

Departure: Friday

Dates: 31 May – 4 June

Meals: Full board

Included excursions

TOUR PRICE

Price per person

£579.00

Single room supplement

£80.00



© Scottish Canals



© Russell Cotes Art Gallery and Museum

4 DAYS
£399
7 - 10 June

A Weekend in Bournemouth

YOUR HOTEL - MARSHAM COURT HOTEL



Marsham Court Hotel, 3 Russell Cotes Rd, East Cliff, Bournemouth, BH1 3AB
 Tel: 01202 552111

The 4* Marsham Court Hotel, is a family-run award-winning hotel boasting a south-facing outdoor heated swimming pool and award-winning gardens. All 95 bedrooms have been stylishly renovated to provide all you will need for a relaxing stay. With their range of standard inland rooms, or make the most of the stunning views, with a sea view or balcony room, at a supplement. Please note that all of their bedrooms are different shapes and sizes due to the age of the building. All rooms have modern bathrooms, many featuring a large walk-in shower, TV, laptop safe, ironing facilities and tea/coffee making facilities. The hotel also features a sun terrace overlooking the bay with sea views. The Plantation Restaurant is where their chefs prepare imaginative dishes using locally sourced ingredients wherever possible. Their outdoor pool provides a peaceful haven to take a refreshing swim or just sit back to relax in one of the sun loungers.

HOLIDAY CENTRE

Bournemouth is the largest resort in Dorset with seven glorious miles of sandy beaches and idyllic coastline, and with beautiful parks and gardens. There will be plenty of things to do while exploring Bournemouth. Enjoy the buzzing nightlife with some of the best pubs, bars and clubs to be found along the south coast. Enjoy beautiful bay walks and breath-taking views from the cliff tops. Discover Hengistbury Head Nature Reserve to the east and the beautiful coastline heading west towards Alum Chine and its tropical gardens. Bournemouth's coastline is the jewel in its crown. Take in some crisp sea air on a pier-to-pier walk along the promenade from Bournemouth Pier to Boscombe Pier or have a go at adventure golf next to Bournemouth Pier.

Day 1 - Depart Local Area

After boarding your luxury coach, you make your way south to Bournemouth. There will be comfort stops en-route for coffee and lunch. Arriving at your hotel by late afternoon, where you will enjoy the next 3 nights with dinner, bed and breakfast at the Marsham Court Hotel, overlooking the sea. On arrival there will be a welcome tea/coffee. After settling in to your rooms, time to relax before dinner.

Day 2 - Swanage & Poole

Today you will visit Swanage and Poole harbour. Swanage marks the eastern end of the world famous Jurassic Coast. The other end officially is Exmouth to the west. The rock at the Swanage end produces the most beautiful white cliffs to rival those around Dover. Swanage is in this pretty part of Dorset which is also known as the Isle of Purbeck. Walk along Swanage Pier and you'll be

walking in the footsteps of generations. Whether you're diving, sailing, fishing or simply strolling, Swanage Pier offers something for everyone including, of course, the finest views of Swanage. Later we catch the ferry to the mega-money areas of Sandbanks, see some of the houses that the rich and famous own. Now onto Poole Harbour, features the second largest natural harbour in the world (after Sydney) and is fast becoming the St Tropez of the South Coast as lucrative investment spreads along the harbour to Sandbanks, Canford Cliffs and Lilliput. Visit the many quaint little shops and cafes along the quay. Later you return back to the hotel.

Day 3 - Day at Leisure

Today is a free day for you to do whatever you would like to do. You may like to walk on the beach, have a paddle, shop, visit the parks etc.

Day 4 - Depart for home via New Forest & Lyndhurst

After breakfast and the cases have been loaded onto the coach, we say farewell to our hosts at the Marsham Court Hotel and head for home. On departing the hotel we head for The New Forest and Lyndhurst. Towering over the skyline is the church of St Michael and All Angels where the grave of former Lyndhurst resident Alice Liddell, Lewis Carroll's inspiration for Alice in Wonderland, can be found. Lyndhurst has a wide range of shops, cosy tea rooms, old world pubs, cafes and fine restaurants to discover. Continue your journey home, to arrive in your local area by late afternoon, early evening.

Your driver/guide will do their professional best to ensure that you enjoy this tour. It will be at their discretion to rearrange the itinerary to better the tour for your comfort.

SPECIAL NOTES

- Insurance/bring your bus pass.
- Please inform us of any special dietary needs e.g.: Diabetic, gluten free, vegetarian etc.
- Special requests are put forward to the hotel, and they will do their utmost to accommodate your needs.
- All rooms have tea/coffee making facilities.
- Itinerary could be subject to change.

TOUR INCLUSIONS

- ✓ All coach travel
- ✓ 3 nights half board
- ✓ Excursion
- ✓ Entertainment
- ✓ Ferry
- ✓ Courier escorted

TOUR INFORMATION

Duration: **4 Days**

Departure: **Friday**

Dates: **7 - 10 June**

Meals: **Half board**

Included excursions

TOUR PRICE

Price per person

£399.00

Single room supplement

£Nil (4 rooms) £75 sup

for Dbl/Tw Room for Sole
Occupancy)



© Benjamin Elliott - Unsplash





7 DAYS
£810

15 - 21 June

Fill your Heart with Ireland

YOUR HOTELS - TALBOT HOTEL STILLORGAN, MANOR HOUSE COUNTRY HOTEL, WILTON HOTEL

Located in the heart of the Fermanagh Lakelands, near Enniskillen, on the shores of Lower Lough Erne, Manor House Country Hotel is one of Northern Ireland's leading hotels. It is the perfect country retreat; you will experience a true sense of tranquillity and enjoy superb views of Lough Erne. Steeped in history; the origins of Manor House Country Hotel date back to the 17th century. A family owned property that combines old world charm with modern hotel luxury and a warm Fermanagh welcome to give this Fermanagh hotel a charming country house ambience. All rooms have en-suite facilities, TV, telephone, tea/coffee making facilities, free Wi-Fi. Take in the view of Lower Lough Erne while enjoying a swim in the large Romanesque pool complete with pool lounge and conservatory area. Please note swim caps are required and can be purchased. Take time out in the jacuzzi, enjoy a session in the steam room, spend some time in the sauna or simply enjoy a relaxing soak in their outdoor hot-tub.

Overnight outward: Talbot Hotel Stillorgan, Stillorgan Rd, Stillorgan, Dublin, Ireland **Tel: +353 1 200 1800**

Main Hotel: Manor House Country Hotel, John Wesley Rd, Enniskillen, BT94 1NY Ireland **Tel: +028 6862 2200**

Overnight Return: Wilton Hotel, Southern Cross Rd, Kilruddery Demesne Eas, Bray, Co. Wicklow Ireland **Tel: +353 1 276 0258**

HOLIDAY CENTRE

The allure of the magnificent lakes of County Fermanagh lies in their wealth of untouched natural beauty and 70 km of crystal-clear waters which captivate and enchant people around the world. This idyllic south-west region of Northern Ireland is surely one of Europe's best kept secrets. Lough Erne offers a piece of paradise for not only the people of Fermanagh, but for the countless varieties of wildlife, from swans and sandpipers to garden warblers and nightjars to the countless fish types of the Lough. For the rest of us, there is the beautiful scenery. The beautiful Erne is geographically divided into two and cascades through two channels. Lower Lough Erne, which is north of the county town of Enniskillen and Upper Lough Erne which is south of the town. The Erne makes its way from each end of County Fermanagh in style, running into a huge island studded lake where the ancient town of Enniskillen stands. 'Enniskillen is known as the island town. The town itself is built on an island at the narrowing of the Lough, Burns adds, 'it is a beautiful central point between the two halves of the lake. You have to cross a bridge to get into the city and then you see a beautiful castle right on the lake.'

Day 1 - Depart Local Area

After boarding your luxury coach, we make our way to Wales and the port of Holyhead and our ferry to Dublin Port. On arrival we make our way to our overnight hotel, which is on the outskirts of Dublin, where we will spend one night with dinner, bed & breakfast.

Day 2 - Depart for Fermanagh Lakelands

Departing our hotel after breakfast, we make our way to Drogheda and the Battle of the Boyne Museum. The Visitor Centre is located in the recently restored 18th century Oldbridge House, the site of a famous historic battle in the 17th century. The battle is brought to life using a laser battle site model, audio visual film, real and replica weaponry and interactive guided tours. There is a Victorian walled garden with unique sunken Octagonal Garden, herbaceous borders and Peach House. There is also the Pavilion Tearoom which overlooks the Victorian garden. An ideal place for lunch. We then head further west to our hotel in Killadeas, the Manor House Country Hotel where we will spend the next 4 nights with dinner and full Irish breakfast.

Day 3 - Derry

Derry, officially Londonderry is the second-largest city in Northern Ireland and the fourth-largest city on the island of Ireland. In 1613, the city was granted a Royal Charter by King James I, and gained the "London" prefix to reflect the funding of its construction by the London guilds. The city is more usually known colloquially as Derry. The old walled

city lies on the west bank of the River Foyle, which is spanned by two road bridges and one footbridge. The city now covers both banks (Cityside on the west and Waterside on the east). The district administered by Derry City and Strabane District Council contains both Londonderry Port and City of Derry Airport. Derry is close to the border with County Donegal, with which it has had a close link for many centuries. Here we will have a local guide to take us on a tour of its walls and historical buildings.

Day 4 - Blessingbourne Country Estate

The Lowry family home, a beautiful historic 550-acre country estate, nestled in the heart of woodlands, lakes and wildlife on the edge of the Clogher Valley, Blessingbourne Estate is one of north west Ireland's most tranquil and unique destinations. Blessingbourne Estate offers guests a unique experience complimented by a warm welcome from estate owners Colleen and Nicholas Lowry. Captain Robert Lowry the father of our current estate owner Nicholas inherited the estate from Peter Montgomery. Over his many years living on the estate, Captain Robert Lowry's hobby of collecting vintage style horse drawn carriages, coaches, buggies and a wide variety of other vintage transport has grown into a Costume and Carriage museum. This unique collection is always a fascination amongst guests who are always thrilled to hear the stories attached to these interesting antiques. At Blessingbourne country estate, visitors will be met by 'Lady Mary' the head maid, she will welcome you

and will tell a brief story of the history of Blessingbourne. There will be refreshments and home baked cakes.

Day 5 - Belleek Pottery & Ulster American Folk Park

After breakfast, we head to the Belleek Pottery for a tour of this amazing factory. Established in 1857, Belleek Pottery holds a very special place in Ireland's cultural and commercial heritage. The guided tour allows you full access behind the scenes of the manufacturing and creative process that goes into every piece of Belleek fine china, produced on site since 1857. Their craftspeople will demonstrate moulding, flowering, painting and basket weaving. After a break, we head to the Ulster American Folk Park which is an open-air museum just outside Omagh, in County Tyrone. Immerse yourself in the story of the brave emigrants who made the journey across the Atlantic to America hundreds of years ago. Enter thatched cottages and meet costumed characters who will show you traditional crafts, tell you a few stories and maybe even share a bit of their good food. Board a full-scale emigrant ship to experience the conditions faced by many as they set sail for a new life in America. With 30 buildings and exhibits to explore, the Ulster American Folk Park is a wonderfully unique experience.

Day 6 - Depart for Dublin & Hotel

After breakfast and our cases have been loaded on the coach, we say farewell to our hosts at the Manor House Country Hotel and

SPECIAL NOTES

- The currency you will need for this tour is Pound Sterling & Euro's.
- Insurance.
- Please inform us of any special dietary needs e.g.: Diabetic, gluten free, vegetarian etc.
- Your request is put forward to the hotel, and they will do their utmost to accommodate your needs.
- To ring back to England, In Northern Ireland you dial: Your normal number. In Southern Ireland: +44 then your number without the beginning 0.
- Program could be subject to alteration.
- Overnight bags can be taken.

TOUR INCLUSIONS

- ✓ All coach travel & ferries
- ✓ 6 nights half board
- ✓ Excursions
- ✓ Entertainment
- ✓ Entrance: Blessingbourne Country Estate with tea & cakes
- ✓ Entrance: Ulster American Folk Park
- ✓ Entrance: Belleek Pottery
- ✓ Entrance to Battle of Boyne Museum
- ✓ Courier escorted

TOUR INFORMATION

Duration: **7 Days**

Departure: **Saturday**

Dates: **15 - 21 June**

Meals: **Half board**

Included excursions

TOUR PRICE

Price per person

£810.00

Single room supplement

£160.00 (in dbl/tw room)

head for Dublin. Free time can be had in Dublin for shopping and sightseeing before we head for our last overnight hotel, The Wilton Hotel in Bray.

Day 7 - Depart for Home

After an early start, and a Grab & Go breakfast, and cases have been loaded into the coach, we say farewell to our hosts at the Wilton Hotel, and head for the port of Dublin for our morning ferry back to Holyhead at 8.05am. Breakfast will be on board (included). Arriving in Holyhead we make our way back through Wales with stops en-route. Arriving home early evening.

Your driver/guide will do their professional best to ensure that you enjoy this tour. It will be at their discretion to rearrange the itinerary to better the tour for your comfort.





**5 DAYS
£569**

24 - 28 June

Llandudno - The Jewel of North Wales

YOUR HOTEL - THE TYNEDALE HOTEL



Tynedale Hotel, 459211 Gloddaeth Crescent,
Central Promenade, Llandudno, Conwy. LL30 2XS

Tel: 01492 877426

The Tynedale Hotel is centrally located on Llandudno's iconic promenade, only 20 metres from the beach and just a pleasant level stroll to the beautiful well preserved pier, theatre and shops. This boutique style 4 star hotel, offers executive sea view rooms, penthouse suites, modern double, twin and single rooms all with modern fabrics, digital TV, telephones, free Wi-Fi, hairdryers and hot drink making facilities. The majority of rooms are accessed by a lift. Peppercorns is their contemporary restaurant located on the lower ground floor, offering a daily choice of traditional and modern dishes. They have a wonderful bar and terrace, and live evening entertainment.

HOLIDAY CENTRE

Llandudno is Wales's largest resort with a multitude of Llandudno hotels, traditional B&Bs, creative self catering and other attractions with amazing things to do. Stroll the perfectly preserved Victorian seafront lined with candy-coloured hotels, or get some sea air with a walk down the historic pier. The Great Orme headland rises above the promenade. A nature reserve with rare flora and - would you believe? - wild Kashmir goats. You can go to the top on the historic tramway, or by cable car. The town is renowned for its sweeping bay and Victorian architecture. It is uniquely situated between the Great and Little Ormes with two wonderful beaches. Did you know that Llandudno is one of the drier places in the country? It has a mild climate all year round. The Victorians knew this and when they designed the town they provided for the comfort of visitors by building covered walkways next to all the shops on Mostyn Street. This means you can walk along the majority of the street and keep your hair dry while you are browsing from shop to shop! When you tire of shopping (is that possible!) you can take a break in one of the many cafes, restaurants and pubs on offer.

Day 1 - Depart Local Area

After boarding your coach and all pickups have been done, you depart your local area for Llandudno. There will be comfort stops on the way. Stopping at Llangollen for lunch. Continuing your journey to Llandudno via the Dee Valley, an area of outstanding natural beauty. On arrival at the Tynedale Hotel, while your cases are taken to your rooms, there will be afternoon tea provided. This evening after dinner, there will be entertainment.

Day 2 - Snowdonia Mountain Railway (included)

What a day we have for you today. Take a once in a lifetime adventure on the Snowdon Mountain Railway, which has been described as one of the most scenic railway journeys in the world. It is a narrow gauge rack and pinion mountain railway that travels for 4.7

miles from Llanberis to the summit of Snowdon, the highest peak in Wales. On a clear day the views can stretch as far as Ireland, it's the UK's highest visitor centre, at 1,085m above sea level. With stunning scenery and awe-inspiring views, it's all part of a great day out. Just a short drive away is the slate museum where we will have a stop to explore. The museum opened in 1972, a building full of memories of the past. The museum has been a hive of activity over the years! Every year people from all over the world, marvel at the skill of the quarrymen and blacksmith. The building has resonated to the sounds of bands and choirs and has been a venue for plays and films. It is now part of an UNESCO World Heritage Site.

Day 3 - Day at Leisure

Today you can please yourselves as to what you want to do. Lay on the

beach (if the weather permits) shop and explore the town or maybe get the old tram to go up the Great Orme. Your guide can arrange this for you as a group.

Day 4 - Plas Newydd House & Gardens (Included)

Today we travel to Anglesey to the beautiful house and gardens of Plas Newydd. Home of the Marquess of Anglesey. The grade 1 listed landscape consists of 40 acres of gardens and 129 acres of woodland and parkland. The mild conditions of the garden allow a wide range of plants to flourish. So much of what's special in the garden is in direct result of the setting and climate. With views across the Menai Strait to the mountains of Snowdonia, it is easy to see why a house has stood in this spot since the early 16th century. Inside you can discover art, military history and also

SPECIAL NOTES

- Insurance.
- Please inform us of any special dietary needs e.g.: Diabetic, gluten free, vegetarian etc.
- Your request is put forward to the hotel, and they will do their utmost to accommodate your needs.
- Itinerary could be subject to change.

TOUR INCLUSIONS

- ✓ All coach travel
- ✓ 4 nights half board
- ✓ Excursions
- ✓ Entrances
- ✓ Mountain Railway
- ✓ Entertainment
- ✓ Courier escorted

TOUR INFORMATION

Duration: **5 Days**

Departure: **Monday**

Dates: **24 - 28 June**

Meals: **Half board**

Included excursions

TOUR PRICE

Price per person

£569.00

Single room supplement

£Nil (6 rooms only)



the interior design that made Plas Newydd what you see today. It is most definitely a hard location to beat. After a wonderful day we return back to the hotel.

Day 5 - Depart for Home

After breakfast and cases have been loaded onto the coach, we say farewell to our host at the Tynedale Hotel and head back. There will be stops on the way. We should arrive at your boarding points late afternoon.

Your driver/guide will do their professional best to ensure that you enjoy this tour. It will be at their discretion to rearrange the itinerary to better the tour for your comfort.



4 DAYS
£399

5 - 8 July

Roaring Salisbury Weekender

YOUR HOTEL - STONES HOTEL



Stones Hotel, Highpost, Salisbury, Wiltshire, SP4 6AT
Tel: 01722 782020

The Stones Hotel is located on the outskirts of the Cathedral City of Salisbury in the rolling Wiltshire landscape between Salisbury and Amesbury. A stone's throw from the World Heritage site of Stonehenge The Stones Hotel is a 4 star hotel in a 1930s building with countryside views, offering 44 comfortable en-suite bedrooms which features comfortable beds and comes equipped with free Wi-Fi, tea/coffee making facilities, TV, ironing facilities, toiletries and a hairdryer. It has a beautiful restaurant, bar and lounge which

opens onto a terrace, their professional and friendly staff are always on-hand to deal with any extra requirements you may have. The Stones Hotel is rated "silver" with Green Tourism and demonstrates best practice measures by way of being green and sustainable as a hotel.

HOLIDAY CENTRE

Salisbury is a medieval cathedral city in the English county of Wiltshire. A cathedral city of ageless beauty and captivating history, Salisbury has been welcoming travellers since 1227. At the city's heart is Salisbury Cathedral, a beacon that has attracted visitors for centuries. Gathered around the cathedral is a modern medieval city, full of buildings crafted with the care of another age. The city's ornate 13th-century cathedral has a 123m spire, the tallest in Britain and the oldest working 14th-century clock in Europe, and an original copy of the Magna Carta (the Great Charter), a key document from 1215 A.D.

Day 1 - Depart Local Area

After boarding your luxury coach, you make your way south to Salisbury. There will be comfort stops en-route for coffee, and lunch. Arriving at your hotel by late afternoon, where you will enjoy the next 3 nights with dinner, bed and breakfast at the Stones Hotel. On arrival there will be a welcome tea/coffee, whilst your luggage is taken to your rooms. After settling in to your rooms, time to relax before dinner.

Day 2 - Salisbury

You spend today in Salisbury, with its historic streets and alleyways and charming half-timbered buildings. You enjoy the morning at leisure, perhaps visiting one of the many museums. Today is also market day. This afternoon we visit the magnificent 13th century Salisbury Cathedral, a 14th century working clock and an original copy of the Magna Carta. You will discover 800 years of history during your guided tour and a tasty cream tea in the Refectory Restaurant. After an historic day, you return back to the hotel.

Day 3 - Longleat Safari Park

Today you visit Longleat with its famous safari drive-through! As you journey through the fabulous land. Keep your eyes peeled for the lions, tigers, wolves, deer, zebras,

white rhinos, cheetahs, giraffes, elephants and some very cheeky monkeys! Once parked up you can enjoy more animal encounters and perhaps enjoy a water-based adventure on The Boat Safari or a journey around the park's scenic woodland on the Longleat Railway. Your day also includes the opportunity to marvel at the exterior of Longleat House, a masterpiece of Elizabethan architecture, and stroll around the beautiful gardens.

Day 4 - Depart for Home

After breakfast and the cases have been loaded onto the coach, we say farewell to our hosts at the Stones Hotel and head for home. There will be comfort stops on your journey home, to arrive in your local area by late afternoon.

Your driver/guide will do their professional best to ensure that you enjoy this tour. It will be at their discretion to rearrange the itinerary to better the tour for your comfort.



SPECIAL NOTES

- Insurance.
- Please inform us of any special dietary needs e.g.: Diabetic, gluten free, vegetarian etc.
- Special requests are put forward to the hotel, and they will do their utmost to accommodate your needs.
- Itinerary could be subject to change.

TOUR INCLUSIONS

- ✓ All coach travel
- ✓ 3 nights half board
- ✓ Porterage
- ✓ No lift but ground floor rooms
- ✓ Guided tour: Salisbury Cathedral - with cream tea
- ✓ Entrance to Longleat Safari Park
- ✓ Courier escorted

TOUR INFORMATION

Duration: **4 Days**

Departure: **Friday**

Dates: **5 - 8 July**

Meals: **Half board**

Included excursions

TOUR PRICE

Price per person

£399.00

Single room supplement

£90.00

(in dbl/tw room)



© Flickr - Brian Robertson



5 DAYS
£499

29 July - 2 Aug

Summer Mystery

YOUR HOTEL - MYSTERY HOTEL

The hotels we use are all well-known and comfortable. All rooms are very comfortable and are en-suite with TV, tea/coffee making facilities. The hotels will look after your every need. The staff are polite and friendly. The hotel also has a bar, lounge and restaurant.

YOUR HOLIDAY CENTRE

Our "Mystery Tour" is very popular, so early booking is essential to avoid disappointment. Our destinations are always a pleasant surprise. These tours represent excellent value for money and accommodation will be of a very high standard. If you haven't yet joined us for a Mystery Tour, then it's time to get on board! On the way to our chosen hotel we stop usually for morning refreshments and somewhere for lunch and arrive at our 'mystery' hotel in plenty of time before dinner. On days 2 - 4, after a leisurely breakfast and usually much discussion about what the day might have in store, we depart for a full day excursion. On the final day, we make our way home via another place of interest. A different experience every time. Could it be country or coastal? Will it be North, South, East or West? We do know you'll be delighted when you get there.

Day 1 - Depart Local Area

After boarding your luxury coach and departing your local area, you start your journey somewhere?

With comfort breaks on route, you should arrive at the chosen hotel somewhere. Here you will spend the next four nights with dinner, bed & breakfast.

Day 2 - 4 Excursions

The next few days have been tailor made for your enjoyment. Maybe market towns, sandy beaches, fishing harbours, moorland or cliffs. You may see some, all or none of these on your excursions, but you will enjoy them. If there are any entrances, these will be included.

Day 5 Return Home

After a satisfying breakfast and your cases have been collected, put back on the coach you depart for home. The return journey will take you a different way home. With comfort stops en-route you should arrive at your local pick up point by late afternoon, early evening.

Your driver/guide will do their professional best to ensure that you enjoy this tour. It will be at their discretion to rearrange the itinerary to better the tour for your comfort.

SPECIAL NOTES

- Insurance.
- Please inform us of any special dietary needs e.g.: Diabetic, gluten free, vegetarian etc.
- Special requests are put forward to the hotel, and they will do their utmost to accommodate your needs.
- Itinerary could be subject to change.

TOUR INCLUSIONS

- ✓ All coach travel
- ✓ 4 nights half board
- ✓ Included excursions
- ✓ Courier escorted

TOUR INFORMATION

Duration: **5 Days**

Departure: **Monday**

Dates: **29 July - 2 Aug**

Meals: **Half board**

Included excursions

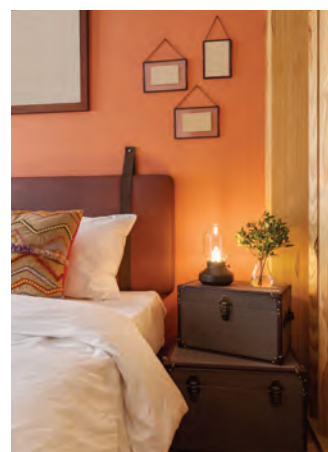
TOUR PRICE

Price per person

£499.00

Single room supplement

£80.00





© Flickr - Chris Ryeoff

Beautiful Isle of Man

YOUR HOTEL - THE EMPRESS HOTEL



Empress Hotel, Central Promenade, Douglas, IM2 4RA
Tel: 01624 661155

The Empress Hotel is located right on the beachfront just a short walk away from the promenade and the busyness of the town centre and attractions. With 102 spacious bedrooms all equipped with LCD flat screen TVs, direct dial telephone, free Wi-Fi, hairdryer and trouser press. There are two restaurants to choose from when dinner is served. The Brasserie is

located on the upper floor which provides spectacular views of the bay, offering locally caught fish and mouth-watering grills. After a long day of sightseeing, you can relax in one of the beauty rooms offering facials, waxing and massages or take advantage of the sauna and steam room.

HOLIDAY CENTRE

Situated between the coast lines of England, Scotland, Ireland and Wales, in the middle of the Irish Sea, you will find this beautiful island. Blessed with an extensive coastline, stunning natural landscape and unspoilt beaches, the Isle of Man is a perfect holiday destination. Douglas is situated on the east coast of the Isle of Man. Douglas has been the island capital since 1863 and holds most of the island's action. Its beautiful seafront is lined with picturesque hotels and restaurants. The shopping high street is filled with familiar names like Boots, Next etc, as well as many locally owned stores. From spring to early autumn, the horse drawn trams run along the promenade which is two miles long. The magnificent sweep of Douglas Bay, against the background of green hills, has a charm hard to equal anywhere. Douglas was a pioneer in illuminations and at night presents a scene of spectacular beauty never to be forgotten.

Day 1 - Depart for Heysham

After boarding our luxury coach, we start our journey heading north. There will be comfort stops en-route. We head for Heysham in Lancashire for the 14:15hrs ferry to Douglas on Isle of Man. On arrival in Douglas at 18:00hrs, we make our way to the Empress Hotel only a few minutes away, where we spend the next 5 nights with dinner bed and breakfast.

Day 2 - Douglas to Port Erin

After breakfast, we head for the railway station in Douglas to take one of the great train journeys of the Isle of Man. Departing Douglas station for Port Erin at 09:50hrs. Step aboard the I.O.M steam railway, this is the longest narrow gauge steam line in the British Isles, running for 16 miles through glorious countryside between Douglas and Port Erin. The Port Erin Railway Museum tells the incredible story of Manx steam railways. Port Erin owes much of its existence to the Victorian tourist, who came for the beautiful

sandy beach set in an enclosed harbour. Arriving in Port Erin, we can have time to explore and have lunch before we board our coach and travel down to Cregneash for wonderful views of the Calf of Man returning to Douglas via Port Mary and Castletown. Don't forget to say good afternoon to the Fairies as you cross Fairy Bridge...this will bring you good luck.

Day 3 - Island Tour

Today we will have a tour of the island, places like St Johns, Tynwald Hill where the Isle of Man has its Parliament, Peel for lunch. Then on to the Manx Transport Museum in Jurby, occupying a former aircraft hangar. A nostalgic look back in time, focusing largely on public transport vehicles, many of which are accessible. You'll be surprised what the smell of a bus does to bring back those childhood memories! Then on to Bride for those who wish to visit Norman Wisdom's grave, Ramsey, TT Racing Course and more. After an interesting day, we

return to the hotel to relax before dinner.

Day 4 - Laxey & Snaefell Railway

After a hearty Manx breakfast, you depart Douglas on the electric train to Laxey. Laxey is a village located on the east coast of the Island. The Laxey mines were the deepest mines in the world during the 1800s. The Great Laxey Wheel 'Lady Isabella' was used to pump water out of the mines. We then board the Snaefell Mountain Railway to the summit of Snaefell, the island's highest peak at 2034ft. This offers amazing views of the Laxey Glens and surrounding countryside. We rejoin our coach at Douglas to return to the hotel.

Day 5 - Day at Leisure

Today you have a free day to do as you will. Shop, explore or just relax.

Day 6 - Depart for Home

After an early Manx breakfast, and all cases have been loaded back onto the

SPECIAL NOTES

- Insurance.
- Please inform us of any special dietary needs e.g.: Diabetic, gluten free, vegetarian etc.
- Your request is put forward to the hotel, and they will do their utmost to accommodate your needs.
- Program could be subject to alteration.

TOUR INCLUSIONS

- ✓ All coach travel & ferries
- ✓ 5 nights half board
- ✓ Excursions
- ✓ Train ride to Port Erin
- ✓ Manx Electric Railway & Snaefell Mountain Railway
- ✓ Courier escorted

TOUR INFORMATION

Duration: **6 Days**

Departure: **Thursday**

Dates: **8 -13 August**

Meals: **Half board**

Included excursions

Hotel not suitable for limited mobility

TOUR PRICE

Price per person

£699.00

Single room supplement

£70.00



coach, we travel back to the port to catch the early morning ferry crossing to Heysham 08:45hrs. Arriving in Heysham approx 12:30hrs. We then retrace our steps back to our pick up area.

Your driver/guide will do their professional best to ensure that you enjoy this tour. It will be at their discretion to rearrange the itinerary to better the tour for your comfort.



4 DAYS
£389

16 - 19 August

Lytham 1940's Weekend

YOUR HOTEL - CLIFTON PARK HOTEL



Clifton Park Hotel
299/301 Clifton Drive South, St Anne's on Sea, Lytham St Anne's, Lancashire, FY8 1HN
Tel: 01253 725801

The Clifton Park Hotel exceeding expectations is fast becoming a hotel renowned for its superior quality and exemplary service. Located centrally in the traditional seaside town of St. Anne's on Sea, this popular hotel provides comfort and hospitality to every guest. From the

moment you enter, their dedicated team of staff will attend to your every need. All rooms are tastefully decorated with en-suite facilities, colour television, direct dialled telephones, thermostatically controlled heating and your own tea and coffee making facilities. A lift serves all floors. The impressive foyer area has a classical French feel throughout. Relax in the comfortable mezzanine or sun lounge whilst enjoying a drink from the Orchard Bar. The impressive garden restaurant with its comfortable warm atmosphere serves breakfast lunch and dinner. Further facilities include lounges, a fabulous ballroom, landscaped gardens and a superb leisure centre, at the heart of which is a stunning indoor pool and spa (Jacuzzi).

HOLIDAY CENTRE

St. Anne's on Sea gives the gentle feel of a bygone age and is slowly being supplemented with an exciting range of new shops and restaurants, providing a welcome contrast to its neighbour, Blackpool. St. Anne's is a haven of tranquillity with four championship golf courses on the doorstep. The promenade of Blackpool is only minutes away, with a vast array of amusements, shops, piers, and of course, the 'Blackpool Tower', there is a lot to offer to people of all ages.

Day 1 - Depart Local Area

After leaving our local area, we travel direct to Lytham St. Anne's with comfort stops on the way. Arriving at the hotel early afternoon, check into your rooms with time to relax and prepare yourself for the forthcoming 1940s themed entertainment. Dinner is served in the Grand Ballroom.

vehicle procession at 1pm that passes through the centre of Lytham, led by Winston Churchill and you'll see jeeps, trucks, vintage bicycles and so much more. The entertainment marquee situated on Lytham Green has two days of free entertainment from 10 - 5pm each day. Dinner will be served in the Grand Ballroom at 7pm.

Day 2 & 3 - At Leisure

The next two days will be filled with entertainment throughout Lytham. Lytham relives the 1940s wartime era with a weekend of 40s singing, dancing, weapons displays, historic vehicles, military charities & vintage traders. Each day there will be a



Day 4 - Depart for Home

After a great traditional farewell breakfast, we say goodbye to our hosts at the Clifton Park Hotel, "we'll meet again don't know where don't know when", and start our return journey home via the Peak District, stopping in Bakewell for lunch. Arriving back to your local area by early evening.

Your driver/guide will do their professional best to ensure that you enjoy this tour. It will be at their discretion to rearrange the itinerary to better the tour for your comfort.

SPECIAL NOTES

- All rooms have tea & coffee making facilities.
- Dinner is at 7:00pm every evening (subject to change).
- Your request is put forward to the hotel, and they will do their utmost to accommodate your needs.
- Please inform us of any special dietary needs e.g.: Diabetic, gluten free, vegetarian etc.
- Itinerary could be subject to change.
- Please bring your Bus Passes.
- You can also dress up in 1940s style.

TOUR INCLUSIONS

- ✓ All coach travel
- ✓ 3 nights half board
- ✓ Excursions
- ✓ Lift
- ✓ Full entertainment program
- ✓ Swimming pool
- ✓ Jacuzzi

TOUR INFORMATION

Duration: **4 Days**
Departure: **Friday**
Dates: **16 - 19 August**
Meals: **Half board**
Included excursions

TOUR PRICE

Price per person

£389.00

Single room supplement

£NIL



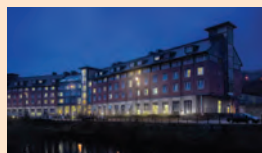


5 DAYS
£545

19 - 23 August

Back in Tyne & Northumbria

YOUR HOTEL - RADISSON BLU HOTEL



Radisson Blu Hotel, Frankland Lane, Durham, DH1 5TA

Tel: 0191 372 7200

Radisson Blu 4* Hotel is Overlooking the River Wear in Durham. Durham presents a prime location. Voted "Best City in the UK". Durham has all the culture and charm you're looking for in an English town. The 207 well-kept, modern bedrooms and suites offer 4-star amenities. All rooms are on-suit, come with flatscreen TVs, coffee and tea facilities, Hairdryer and toiletries.

Collage Restaurant offers a unique twist on the British Brasserie with a range of signature dishes and British fare. The Bar serves a food menu, great drinks and classic cocktails early into the morning. Unwind at the fitness and wellness facilities which include a swimming pool. Enjoy helpful services like on-site parking, express laundry and smart TV's with Chromecast service.

HOLIDAY CENTRE

The county of Northumberland is the most northern of the English counties bordering County Durham and Newcastle upon Tyne in the south, Cumbria and The Lake District to the west and, of course, Hadrian's Wall and the Scottish Borders to the north. Much of the area is unpopulated, tranquil, with mile-after-mile of clean and safe award-winning golden sandy beaches, quiet country lanes and an unequalled sense of freedom. Explore mile upon mile of gloriously uncrowded golden sandy beaches and stunning countryside set amongst two Areas of Outstanding Natural Beauty and the rugged Northumberland National Park. Discover more castles than anywhere else in England, the birthplace of English Christianity on the Holy Island of Lindisfarne, the historic World Heritage Site of Hadrian's Wall, picturesque towns and villages and, at the end of it all, historic houses and heritage sites abound in Northumberland.

Day 1 - Depart for Durham

Departing our local area, we travel north to the City of York, one of the most attractive old cities in England. The city walls, themselves among York's main attractions, enclose streets which follow their narrow and irregular medieval course, with overhanging rows of old buildings. The beautiful York Minster is the largest English medieval cathedral. We will stay here for lunch and sightseeing, and then we will continue on to our hotel, for the next 4 nights with dinner bed & breakfast.

Day 2 - Bamburgh Castle

Today we visit the North East coast of Northumbria and Bamburgh Castle. Follow in the footsteps of Uhtred into the real Last Kingdom of Bebbanburg, an Anglo-Saxon citadel where saint kings ruled the Kingdom of Northumbria. Discover a Norman stronghold, Royal seat and the first castle in the world to fall to gunpowder. Experience the magic of magnificent Bamburgh Castle for yourself that captured the heart and mind of one of the Victorian's greatest

inventors, William George Armstrong. Its treasure filled staterooms, including the castle's centrepiece - The King's Hall, discover a fortress like no other at Bamburgh Castle. Bamburgh Castle remains the private, family seat of the Armstrong family to this day and has starred in countless films and small screen productions, from Transformers The Last Knight, to Netflix hit Frontier and of course, The Last Kingdom. From here you travel along the coast to Holy Island (if tide permits) then Seahouses for the best fish & chips. Then onto Newbiggin by the Sea with its Couple Statue in the harbour, time to explore or grab a drink, then back to the hotel.

Day 3 - Alnwick Castle & Gardens

Today we travel into Northumbria to Alnwick gardens, set within a secretive walled garden, its centrepiece the Grand Cascade, the largest water feature of its kind in the country. More than 120 separate water jets create spellbinding water displays. It is a garden for all seasons; the Tree House (one of the largest structures of its kind in the world) will provide an amazing

selection of buildings linked together by suspended walkways in the sky. A place to eat, walk, rest and much more. The Castle, with 950 years of history to explore, has also been made famous as the setting for the Black Adder series and Harry Potter Films. Home to the Duke and Duchess of Northumbria. The castle has magnificent views over the river Aln and surrounding countryside. Within the massive stone walls, the beautifully kept grounds contain fascinating exhibitions. Enter the wonderful family home; see the staterooms, refurbished in the mid 19th century by the fourth Duke, the library also used in the Harry Potter movie. Just a short walk away is the lovely old town of Alnwick. We return to our hotel after a great day out.

Day 4 - Cragside House & Gardens

Today we head for Cragside House & Gardens. In its day, Cragside was a house of wonders, with features that we take for granted today, but were the very cutting edge of technology and innovation in the late Victorian period. Lord Armstrong introduced extraordinary gadgets and features like

SPECIAL NOTES

- Insurance/Bring a buss pass.
- Please inform us of any special dietary needs e.g.: Diabetic, gluten free, vegetarian etc.
- Your request is put forward to the hotel, and they will do their utmost to accommodate your needs.
- Itinerary could be subject to change.

TOUR INCLUSIONS

- ✓ All coach travel
- ✓ Porterage
- ✓ 4 nights half board
- ✓ Excursions & entrances
- ✓ Courier escorted

TOUR INFORMATION

Duration: 5 Days

Departure: Monday

Dates: 19 - 23 August

Meals: Half board

Included excursions

TOUR PRICE

Price per person

£545.00

Single room supplement

£96.00 (tw/dbl)

a passenger lift, fire alarm buttons throughout the house, a Turkish bath suite, and a peculiar new invention called a telephone. Lord Armstrong was more than an inventor; he was also a landscape gardener. He laid out 5 lakes on the Cragside estate, and planted over 7,000,000 trees and shrubs. That's no misprint; there really are 6 zeros in that number; that's 7 million new trees and shrubs throughout the estate. One of the unexpected side benefits of all those trees is that the endangered British red squirrel has settled in the Cragside woodland.

Day 5 - Depart for Home

After breakfast and the cases have been loaded onto the coach, we say farewell to our hotel and head for home. Later stopping at the spa town of Harrogate where you can have lunch, and then on departing Harrogate, we continue our journey home, arriving in your local area by early evening.

Your driver/guide will do their professional best to ensure that you enjoy this tour. It will be at their discretion to rearrange the itinerary to better the tour for your comfort.



5 DAYS
£489

1 - 5 September

A Cornish Dream

YOUR HOTEL - ROSEMUNDY HOUSE HOTEL



Rosemundy House Hotel, St Agnes, Cornwall, TR5 0UF
Tel: 01872 552101

The hotel has been a favourite of ours since we first visited in the year 2000. This very private hotel has been family run for years and has a very relaxing and comfortable air about it. Beautiful quiet lounges for relaxing, superb Tom Noggi Restaurant with excellent cuisine, well equipped comfortable bedrooms with bath or shower. Set in its own grounds in the centre of St Agnes. The village is set back from the cliffs by $\frac{3}{4}$ mile; Trevaunance Cove is the nearest thing to a sheltered harbour that this inhospitable coast affords. Strewn with old mine

workings, copper and tin ore were once shipped from the cove.

HOLIDAY CENTRE

Tucked into a stunning and unspoilt spot on the coast, St. Agnes sits in both a designated Area of Outstanding Natural Beauty and a World Heritage Site. St. Agnes is a picturesque village on the north coast of Cornwall. Steeped in mining history, the village retains a traditional friendly Cornish atmosphere and makes a wonderful base for a holiday, with four different beaches. There are dramatic coastal walks and breathtaking scenery filled with relics from the past, including the iconic Wheal Coates engine house. You will discover a thriving community with a choice of shops as well as galleries and craft workshops where beautiful gifts are made by hand. Sample the beautiful scenic coastline, fantastic beaches, arts and craft shops and mining heritage.

Day 1 - Depart Local Area

After boarding your luxury coach, your holiday has now started. You start your journey by travelling westward with stops en-route for lunch. Continuing your journey through beautiful countryside, to the Cornish town of St. Agnes and the Rosemundy House Hotel where you shall spend the next 5 nights with dinner, bed and breakfast.

Day 2 - Falmouth & Seal Sanctuary

After breakfast your journey takes you first to Falmouth. It's known for its deep natural harbour on the Fal Estuary. Shipping from all over the world use the harbour, which is the largest in the country and includes a dry dock capable of handling tankers of up to 90,000 tons? It became a station for the Mail Packet Service in 1688, and by 1827 had 39 overseas-mail vessels. The National Maritime Museum Cornwall has interactive galleries and a flotilla of model boats. On Pendennis Point, Pendennis Castle is a well-preserved 16th-century

fortress built by Henry VIII. This afternoon we visit the Cornish Seal Sanctuary in Gweek (included). The Cornish Seal Sanctuary rescues numerous pups every year. With a self guided tour you will be able to follow the journey of their injured seal pups through their rescue from local coastal waters, through rehabilitation and eventually release back into the wild. There will also be a cream tea provided for you to enjoy.

Day 3 - Penzance & St Ives

Today is a full day tour around the west Cornwall Peninsular. Our first stop will be at the ancient market town of Penzance with its pretty harbour and level seafront. One of the striking things about the town is the abundance of palm trees and gardens full of sub-tropical plants, a sure sign that you have arrived somewhere unique made even more special by the sight of St. Michael's Mount out to sea that seems to hover magically over the water. After leaving Penzance, you travel along the coast to St. Ives.

Wander the maze of cobbled streets with their quaint stone cottages and explore the harbour. Plenty of pavement cafes, ancient pubs, top notch eateries and a fascinating working harbor, St. Ives is deservedly one of Cornwall's top destinations. Returning back to your hotel to relax before dinner.

Day 4 - Mevagissey & Truro

Today you shall first visit the lovely harbour of Mevagissey. Mevagissey is an attractive old town which was once the centre of Cornwall's pilchard fishery and which still boasts a working harbour, with a few dozen small fishing boats. It has a tradition of boat building dating back to 1745. Many of the old buildings, constructed of cob and slate, bear testimony to a time when the large shoals of pilchards was the livelihood of the whole village. In the narrow streets are many gift shops, craft workshops, galleries, cafés and pubs. There are many fish restaurants in Mevagissey and, of course, plenty of fish and chip

SPECIAL NOTES

- Insurance.
- Please inform us of any special dietary needs e.g.: Diabetic, gluten free, vegetarian etc.
- Special requests are put forward to the hotel, and they will do their utmost to accommodate your needs.
- Itinerary could be subject to change.

TOUR INCLUSIONS

- ✓ All coach travel
- ✓ 4 nights half board
- ✓ Excursions
- ✓ Entrance to Seal Sanctuary
- ✓ Courier escorted

TOUR INFORMATION

Duration: 5 Days

Departure: Sunday

Dates: 1 - 5 September

Meals: Half board

Included excursions

TOUR PRICE

Price per person

£489.00

Single room supplement
£Nil

shops! Many of the latter were once the haunts of Cornish smugglers. This afternoon we go to Cornwall's administrative capital and Cathedral City Truro. Centre stage is Truro Cathedral with its impressive gothic towers dominating the skyline. In its shadow, a warren of compact streets is home to an impressive array of independent traders. From boutiques to bookshops and designer interiors to delicatessens, this great little city offers a unique shopping experience. The café culture is pretty impressive too, with hip coffee houses, artisan ice creameries and cocktail bars dotted across the centre.

Day 5 - Day of Departure

After a hearty breakfast and cases have been loaded onto the coach. It is time to say farewell to your hosts at the Rosemundy House Hotel. Retracing your steps, with comfort stops en-route. You will arrive in your local area, late afternoon early evening.

Your driver/guide will do their professional best to ensure that you enjoy this tour. It will be at their discretion to rearrange the itinerary to better the tour for your comfort.

**5 DAYS
£529****15 - 19 September**

Heart of Wales

YOUR HOTEL - THE METROPOLE HOTEL & SPA



The Metropole Hotel and Spa,
Temple Street, Llandrindod Wells, Powys, LD1 5DY
Tel: 01597 823700

The Metropole Hotel, built in 1896, was the largest hotel in Wales upon completion and provides a great location in the heart of Wales. Each of our comfortable 122 bedrooms have en-suite bathroom and shower, colour television, direct dial telephone, trouser press, hairdryer and tea and coffee making facilities. You can enjoy traditional cuisine using only the finest of local ingredients in the elegant Radnor Restaurant. There is also the Spencer's Bar and Pantry which has a more informal atmosphere if you just want a drink. The hotel has a superb indoor Leisure Complex in a Victorian style conservatory. Facilities include a 54ft heated swimming pool, sauna, whirlpool, steam room, beauty salon and exercise machines to help you relax after a long day.

HOLIDAY CENTRE

Llandrindod Wells evolved from a small farming village into a popular tourist resort and spa town. As the name suggests, the history of the town is linked with the health-giving waters. Hundreds of Victorians flocked to take to the water and you can still try the waters at the Chalybeate Spring in the Rock Park. The building architecture around the town all date back to the Victorians making it feel like you've stepped back in time. Located in the heart of Wales it has a reputation as one of the country's most beautiful and breathtaking areas. The Elan Valley, with spectacular dams and reservoirs, the Brecon Beacons magnificent mountain range and the small market towns such as Hay-On-Wye and the Cardigan Bay Coast all create the contrasting yet stunning scenery.

Day 1 - Depart for Llandrindod Wells

After boarding your luxury coach, we head west and over the border in to Wales, with comfort stops en-route. We arrive at The Metropole Hotel where we will spend the next four nights with dinner, bed and breakfast. On arrival we can relax while our cases are taken to our room.

Day 2 - Elan Valley

Today we escape to the Elan Valley and its Visitors Centre, a world away from normal life, for a coach tour by a local ranger for 1½ hrs. Taking in the best parts of this wonderful area. This also includes entrance to the Visitors Centre. This beautiful and unspoilt

area made even more compelling by the dams and reservoirs which together create a wonderful living landscape. Later explore Llandrindod Wells, whose towers and ornate ironwork reflect its heyday as a Victorian spa town.

Day 3 - Vale of Rheidol Railway

Today we take a scenic ride through beautiful Welsh countryside to Aberystwyth. Aberystwyth is the principal holiday resort of the west coast of Wales. The town is nestled between three hills and two beaches, and has some castle ruins, a pier and a harbour. The surrounding hills hold the visible remains of an Iron Age fort and

also a monument to Wellington and once climbed offer stunning views of Cardigan Bay. Later we board the Vale of Rheidol steam railway to Devils Bridge. The narrow gauge heritage steam railway, opened in 1902, runs between Aberystwyth and Devils Bridge. After arriving at Devils Bridge there will be time to explore the little town and the Devils Bridge, and for the more adventurous you can walk the many many steps down to the Devils Falls. Later we return to the hotel to relax before dinner.

Day 4 - Boat Cruise on Brecon & Monmouthshire Canal

Today we head off to the Brecon to spend a delightful few hours cruising through some of the most beautiful scenery in Britain lying within the Brecon Beacons National Park. Travel on the Monmouth and Brecon Canal - a historical waterway and fantastic feat of engineering, built before roads and railways. Cruise through a canal lock and over an aqueduct carrying

SPECIAL NOTES

- Insurance/Bring your bus pass.
- Please inform us of any special dietary needs e.g.: Diabetic, gluten free, vegetarian etc.
- Your request is put forward to the hotel, and they will do their utmost to accommodate your needs.
- Itinerary could be subject to change.

TOUR INCLUSIONS

- ✓ All coach travel
- ✓ Portage
- ✓ 4 nights half board
- ✓ Excursions
- ✓ Entertainment on one evening
- ✓ Guided tour Elan Valley
- ✓ Train ride
- ✓ Boat cruise with buffet lunch
- ✓ Courier escorted

TOUR INFORMATION

Duration: **5 Days**Departure: **Sunday**Dates: **15 - 19 September**Meals: **Half board**

Included excursions

TOUR PRICE

Price per person

£529.00

Single room supplement

£48.00 (4 rooms only)

the canal over the River Usk. A buffet lunch will be provided on board, consisting of sandwiches, pastries, Welsh cakes and scones, followed by a choice of hot or cold drinks. Returning back to hotel.

Day 5 - Day of Departure

After breakfast and all cases have been loaded onto the coach, we say farewell to your hosts at the Metropole Hotel, and start the journey home. With comfort stop en-route we shall arrive in your local area by late afternoon.

Your driver/guide will do their professional best to ensure that you enjoy this tour. It will be at their discretion to rearrange the itinerary to better the tour for your comfort.





Victoria's Beautiful Island Weekender

YOUR HOTEL - CHANNEL VIEW HOTEL



Channel View Hotel, Hope Road, Shanklin, Isle of Wight, PO37 6EH

Tel: 01983 862309

Situated in a premier location within Shanklin town, the 3* Channel View Hotel has a well-deserved reputation for always delivering high standards in service and hospitality. The hotel has picturesque views of the English Channel. Set atop the cliffs of Shanklin Bay. The hotel is in prime location on the coastal path and within walking distance of their amazing beaches. All 56 rooms are en-suite with complimentary toiletries and large

fluffy towels, TV, telephone, hairdryer and tea/coffee making facilities. The Osborne dining room is where you can enjoy the benefits of full table service and prominent sea views. The hotel has an indoor swimming pool, a jet spa and sauna. Free guest Wi-Fi throughout the hotel.

HOLIDAY CENTRE

The Victorians adopted the Isle of Wight as a holiday island, and tourism has been its bread and butter ever since. The high chalk downs and famous chines, or clefts, along the south coast appealed to the Victorian's sense of picturesque; and the resorts they built have given the island a lasting appeal for lovers of Victorian architecture. The fortifications of the Isle of Wight provide an historic insight into the Island's strategic role throughout history. Carisbrooke Castle dates from Norman times and brings history alive to many thousands of visitors each year. Shanklin, located on the east side of the island, a lift takes you down to the sheltered sands and pier. The old village has one of the prettiest inns on the island, The Crab Hotel.

Day 1 - Depart Your Local Area

Step aboard your luxury coach as you start your journey to Portsmouth and the ferry to the Isle of Wight. There will be a comfort stop en-route for lunch. We arrive at Portsmouth for the short crossing to Fishbourne, where we continue our journey to Shanklin and the Channel View Hotel where we will spend the next 3 night's half board. Time to relax before dinner.

Day 2 - Island Tour

Departing after breakfast, we enjoy a full day scenic tour of the southern part of the island, taking in places like Ventnor, Black gang Chine. Continuing along the military road, we will have a

comfort stop at the Isle of Wight Pearl where you can have a look around the famous pearl shop and have a morning cuppa. From here we travel along the Military Road to Freshwater Bay. Later we will see the Needles and the multi-coloured cliffs of Alum Bay. We continue on to Yarmouth, where we will have time for afternoon tea. We then make our way back via Carisbrooke Castle 13th century picturesquely situated on a hill, long the seat of authority on the island, then to Shanklin where you will have time to relax before dinner.

Day 3 - Steam Railway

Today we start with a trip to the Isle of Wight Steam Railway (Included). Time to explore the Steam Railway and the museum with its many Loco's and carriages on view. Later we board the train for a nostalgic ride. It's a five-mile trip from Havens street & return. We invite you to join in the celebration of a bygone age and take a journey back in time. All the carriages and most of the locomotives have spent much of their working lives on the Island. They have all been painstakingly restored to a pristine condition and are the hallmark of this delightful railway. The oldest locomotive was built in 1876 and carriages date back to 1864.

Day 4 - Depart Shanklin

After a leisurely breakfast we bid a fond farewell to our hosts at the Channel View Hotel, and we retrace our steps back to Fishbourne and the ferry to Portsmouth. Travelling back, we will have a break at the beautiful town of Winchester. After lunch we head back to our local area, arriving home late afternoon/early evening.

Your driver/guide will do their professional best to ensure that you enjoy this tour. It will be at their discretion to rearrange the itinerary to better the tour for your comfort.



SPECIAL NOTES

- Insurance.
- Please inform us of any special dietary needs e.g.: Diabetic, gluten free, vegetarian etc.
- Your request is put forward to the hotel, and they will do their utmost to accommodate your needs.
- All rooms have tea/coffee making facilities.
- Itinerary could be subject to change.

TOUR INCLUSIONS

- ✓ All coach travel
- ✓ Ferries
- ✓ 3 nights half board
- ✓ Excursions
- ✓ Steam train ride
- ✓ Some entertainment
- ✓ Courier escorted

TOUR INFORMATION

Duration: **4 Days**

Departure: **Friday**

Dates: **20 - 23 Sept**

Meals: **Half board**

Included excursions

TOUR PRICE

Price per person

£369.00

Single room supplement

£Nil (6 rooms only)



7 DAYS
£699

29 Sep – 5 Oct

Kingdom of Kerry

YOUR HOTELS - MALDRON HOTEL WEXFORD, RIVER ISLAND HOTEL, WILTON HOTEL

The 3* River Island Hotel is ideally located on Castleisland's Main St. and offers guests and locals alike a wonderful choice of onsite facilities. The River Island Hotel is a hotel which is not compromised by design or over styled, but a place where the overall effect is relaxed and homely. The hotel boasts 52 wonderfully appointed guest rooms, all with en-suite, free toiletries, safe, TV, telephone, iron and hairdryer. These wonderfully appointed guest rooms offer a haven of peace and tranquillity in the heart of town. The Con's Bar & Restaurant offers afternoon menus that celebrate the wealth of locally sourced produce.

Out

Maldron Hotel Wexford
Dublin Road, Wexford
Co Wexford, Ireland
Tel: 00353 53 9172000

Main Stay

River Island Hotel
Lower Main Street, Castleisland
Co Kerry, Ireland
Tel: 00353 66 7142555

Return

Wilton Hotel
Southern Cross Rd, Bray
Co Wicklow, Ireland
Tel: 00353 1 276 0258

HOLIDAY CENTRE

County Kerry contains some of Ireland's most iconic scenery: surf-pounded sea cliffs and soft golden sands, emerald-green farmland criss-crossed by tumbledown stone walls, mist-shrouded bogs and cloud-torn mountain peaks. With one of the country's finest National Parks as its backyard, the lively tourism hub of Killarney spills over with colourful shops, restaurants and pubs loud with spirited traditional music. The town is the jumping-off point for Kerry's two famed loop drives: the larger Ring of Kerry skirts the mountainous, island-fringed Iveragh Peninsula. The more compact Dingle Peninsula is like a condensed version of its southern neighbour, with ancient prehistoric ring forts and beehive huts, Christian sites, sandy beaches and glimpses of a hard unforgiving land. Kerry's exquisite beauty makes it one of Ireland's most popular tourist destinations. But if you need to escape from the crowds, there's always a mountain pass, isolated cove or an un-trodden trail to discover.

Day 1 - Depart Local Area

After boarding your luxury coach, we make our way to South Wales and the port of Fishguard and our afternoon Ferry to Rosslare Port. On arrival we make our way to Wexford for our overnight stay at the 3* Maldron Hotel located in the centre of town, where we will spend one night with dinner, bed & breakfast.

Day 2 - Depart for Castleisland

After breakfast we continue our journey across the most southern part of Ireland via Youghal to Blarney, a visit can be made to the Castle (at own expense) and take part in the long-standing tradition of kissing the Blarney Stone to receive "the gift of eloquence" (but only for the fit ones). We will stop at the Blarney Woollen Mills close to the village green, which offers the best range of genuine Irish products. We continue our journey to Castleisland and the 3* River Island Hotel where we will spend the next 4 nights half board.

Day 3 - Killarney & Jaunting Car Ride

After breakfast we travel to Killarney, Set in the Irish Lake District and internationally renowned for its scenic beauty. There will be a ride on the traditional Jaunting cars, which will take you for a ride through the National Park and along the edge of Lough Leane to Ross Castle. From here catch the Lily of

Killarney to cruise across the lake, (all included) a memorable way to view the surrounding mountains. An included return coach transfer from Ross Castle back to Killarney town, here you will have free time. Later we return back to Castleisland to relax before dinner and entertainment.

Day 4 - Ring of Kerry

Departing after breakfast we take a full day excursion around the Ring of Kerry. Dominated by MacGillycuddy's Reeks, savour 100 miles of spectacular scenery as you travel along the narrow coastal road of the Iveragh Peninsula. Beginning at Killorglin, home of the world's oldest market, the famous Puck Fair, through Glenbeigh, continue through the villages of Rossbeigh and Kells, with their beautiful golden beaches to Caherciveen for lunch. Passing through villages to Molls Gap, a cutting between bogland and mountains. The winding road passes Ladies view. before returning back to our hotel in Castleisland.

Day 5 - Dingle & the Dingle Peninsular

The Dingle Peninsular stretches 30 miles (48 kilometres) into the Atlantic Ocean from Ireland's south-west coast. Dominated by the range of mountains that form its spine. The peninsular has something to offer to everyone: sandy beaches safe for swimming, walking

routes for all abilities, a thriving Irish language community, and a rich musical tradition. There was also a resident dolphin called Fungie here, the name given to him by the fishermen. He was a fully grown, middle aged, male bottlenose. His home was Dingle Bay. He has not been seen for a while presumed deceased, but you never know!! Returning back to our hotel to relax before dinner.

Day 6 - Depart for Dublin

After breakfast we depart for Dublin, stopping on route at the Irish National Stud (entrance Inc). The Irish National Stud offers you a unique experience that can be enjoyed at your own leisure or as part of a guided tour. The Japanese Gardens are among the most loved of all Ireland's gardens, a veritable feast for the eye and ear with the sight and sound of trickling streams perfectly complementing the greenery and vivid colours that provide a tranquil backdrop to the beautiful Bridge of Life and Tea House. After our break here we continue onto Dublin and Bray for our last overnight stay at the Wilton Hotel Bray, with dinner.

Day 7 - Depart for Home

After an early "Grab & Go" breakfast and all overnight cases have been loaded onto the coach we travel into Dublin to catch the early morning ferry

SPECIAL NOTES

- The currency you will need for this tour is the Euro.
- Insurance.
- Please inform us of any special dietary needs e.g.: Diabetic, gluten free, vegetarian etc.
- Your request is put forward to the hotel, and they will do their utmost to accommodate your needs
- There is tea/coffee making facilities in all hotels.
- To ring back to England, you dial: - +44 then minus the 0 from your code, followed by your number.
- Overnight bags required.
- Program could be subject to alteration.
- Exchange Rate: The price is NOT guaranteed against any alterations as a result of currency fluctuations. We have done our best to calculate in advance.

TOUR INCLUSIONS

- ✓ Ferries
- ✓ All coach travel
- ✓ Portage
- ✓ 2 overnights
- ✓ 4 nights half board
- ✓ Excursions
- ✓ Entertainment
- ✓ Main hotel: complementary drink with dinner each evening. wine, beer, soft drink
- ✓ Courier escorted

TOUR INFORMATION

Duration: **7 Days**

Departure: **Sunday**

Dates: **29 Sep – 5 Oct**

Meals: **Half board**

Included excursions

TOUR PRICE

Price per person

£699.00

Single room supplement

£132.00 (dbl/tw room

for sole occupancy)

crossing from Dublin to Holyhead at 8.15hrs. (Breakfast is included on the ferry) Arriving in Holyhead approx 11.50am. We will make our way back through Wales with stops en-route. Arriving home early evening.

Your driver/guide will do their professional best to ensure that you enjoy this tour. It will be at their discretion to rearrange the itinerary to better the tour for your comfort.





4 DAYS
£399

11 - 14 October

Robin Hood Weekender

YOUR HOTEL - MERCURE NOTTINGHAM SHERWOOD HOTEL



Mercure Nottingham Sherwood Hotel, 296 Mansfield Rd, Nottingham, NG5 2BT
Tel: 0115 935 9988

The 4* Nottingham Sherwood Hotel is located close to the city centre. The air-conditioned rooms have en-suite bathrooms with shower or bath, hairdryer, free toiletries, flat-screen TV, tea/coffee making facilities, ironing facilities, and safe. The open plan restaurant is situated in the conservatory and offers a full range of seasonal dishes, and the bar has a pool table. The Health Club features fitness facilities, indoor swimming pool and steam room.

HOLIDAY CENTRE

A green city with a legendary past, a vibrant culture and a bright future. A creative destination of rebels and pioneers, and the home of Robin Hood. Nottinghamshire is one of the UK's top destinations and a warm welcome always awaits. Whether you visit Nottinghamshire for a weekend break or a day out with the kids at top attractions, you can see world class sport, amazing live performances, excellent nightlife and cutting edge art in outstanding venues. Rousing stories of rebellion and virtue are written into our DNA - visit the enchanting Sherwood Forest to walk in the footsteps of Robin Hood, learn of castles torn apart by civil war, or enjoy a cocktail in one of the city's cave bars. You can even trace the daring footsteps of the Mayflower Pilgrims from Nottinghamshire to the Americas, before learning how Nottinghamshire innovations like MRI scanners have helped change the world for the better.

Day 1 - Depart Local Area

After all pickups have been done you start your journey to Nottingham. There will be stops on the way for lunch. When you arrive at the hotel there will be tea/coffee on arrival whilst your luggage is taken to your rooms. This evening's dinner choice will be made on arrival, and then it will be at breakfast each morning. There will be tea/coffee after dinner, and also a glass of wine, beer or soft drink on first night at dinner.

Day 2 - Step-on Tour / Walking Tour of Nottingham

We start first thing with a 3hr part walk/part step-on guided tour by your local guide Ezekiel Bone; Nottingham's official outlaw, Robin Hood! We stroll around the Victorian Lace Market, once the commercial heart of a world-wide empire in machine made lace, learning about the evolution of Nottingham's textile industry. We hear the truth behind the Robin Hood legend with masterful storytelling by our aptly dressed guide. This afternoon we take to the water for a relaxing 3hr cruise on the River Trent. As we set sail, we tuck into a 2 course traditional roast lunch with tea/coffee, taking in the lovely scenery and superb views of the historic city.

Day 3 - Sherwood Visitors Centre & Newark/Southwell Workhouse

This morning we enjoy an adventure at the Sherwood Forest Visitors Centre, gateway to the historic woodland with many beautiful trails and legendary home of Robin Hood, one of the best loved folk heroes. We follow a train through the forest to

discover its most famous ancient resident, the Major Oak Tree. With a canopy spread of 26 metres, this amazing tree is the oldest oak in Britain and fabled to have been used as a shelter for Robin and his Merry Men as they outwitted the forces of the law. There is some free time for lunch in Newark-on-Trent. This afternoon we indulge in a sobering social history at the atmospheric Southwell Workhouse. It offers a fascinating vignette of how the poor lived as we explore the rooms, vegetable garden and yards and find out about the role of the workhouse and how it evolved through time.

Day 4 - Depart for Home

After breakfast and all cases have been loaded, we say farewell to our hosts at the Mercure Nottingham Sherwood Hotel, and start our journey back.

Your driver/guide will do their professional best to ensure that you enjoy this tour. It will be at their discretion to rearrange the itinerary to better the tour for your comfort.



SPECIAL NOTES

- Insurance/bring your bus pass.
- Please inform us of any special dietary needs e.g.: Diabetic, gluten free, vegetarian etc.
- Special requests are put forward to the hotel, and they will do their utmost to accommodate your needs.
- Itinerary could be subject to change.

TOUR INCLUSIONS

- ✓ All coach travel
- ✓ Portage
- ✓ 3 nights half board
- ✓ Entertainment
- ✓ Excursions
- ✓ Guided tour & entrances
- ✓ Boat cruise & lunch
- ✓ Courier escorted

TOUR INFORMATION

Duration: **4 Days**

Departure: **Friday**

Dates: **11 - 14 October**

Meals: **Half board**

Included excursions

TOUR PRICE

Price per person

£399.00

Single room supplement

£82.00 (Dbl/Tw room)





9 DAYS
£989

13 – 21 October

Italian Lakes – The Ultimate Collection

YOUR HOTELS – 4* NOVOTEL DIJON SUD, 4* HOTEL GIARDINETTO

The 4-star Hotel Giardinetto lies on the shores of Lake Orta, directly on the water, in an oasis of tranquillity. The Hotel has been within the Primatesta family since Luciano Primatesta founded it as an Inn in 1930. It has all the standards of a modern hotel, but with its own charm, a breathtaking view and the thoroughly romantic environment of the lake. The hotel has 59 very comfortable rooms, with air conditioning, private bathroom with shower, SAT TV, free Wi-Fi, direct dial phone, tea and coffee facilities and safe. It has an outdoor pool (for those who don't wish to swim in the lake). The restaurant, with its unique terraces directly on the water, has become famous for its regional and creative cuisine. They carefully resource the finest raw ingredients to be used with their characteristic creativity. This enables them to present you with the freshest dishes of incredible taste. These are the overriding principles of the Chef making their cuisine unique. Their wine cellar has over 450 Italian, French and International labels.

Overnights: 4* Novotel Dijon Sud, 11 Rte de Beaune, 21160 Marsannay-la-Côte, France **Tel: +33 3 80 51 59 00**

Main Hotel: 4* Hotel Giardinetto, Via Provinciale, 1, 28028 Pettenasco NO, Italy **Tel: +39 0323 89118**

HOLIDAY CENTRE

Backed by the breath-taking scenery of snow-capped mountains edged with grand villas and laid-back towns, it is so easy to understand why Italy's lakes are so popular. Lake Orta is a hidden gem in the serene northern lakes, described as being the place where the Alps meet Heaven, and it provides a perfect setting to explore other beautiful Italian lakes nearby, like Lake Orta and Lake Maggiore, San Giulio Island, and beyond. Plus a neighbouring Swiss one!

Day 1 - Depart Local Area

Leaving your local area, the journey starts with your morning ferry from Dover to Calais. A meal voucher will be given to you for use on board for a main meal and drink. Making your way from Calais, you travel through France with comfort stops, to arrive at your overnight hotel, the Novotel Dijon Sud. There will be portage while you partake in a welcome glass of orange juice on arrival. Dinner is a set menu with tea/coffee after dinner.

Day 2 - Dijon to Lake Orta

After an early start, you continue your journey through France into Switzerland then later into Italy. There will be comfort stops on the way. On arrival at the Hotel Giardinetto your cases will be taken to your room while you enjoy a welcome drink of Prosecco or fruit juice. Settle in before dinner. Dinner choice is made on arrival and menu for second day onward is made at breakfast. Tea/coffee after dinner each night.

Day 3 - Lake Maggiore & Borromean Islands (Included)

Today you travel to Lake Maggiore and the main resort of Stresa, with its lovely lakeside setting facing the beautiful Borromean Islands. You take the boat out to Isola Bella and visit its beautiful Palazzo stately home and elegant Italianate gardens where the famous white peacocks roam, before continuing by boat to Isola dei Pescatori (Fishermans Island) the only island which is currently inhabited. Returning back to Stresa by

boat. Boarding your coach to return back to the hotel.

Day 4 - A Boat trip to Orta San Giulio

A delightful day exploring the highlights of Lake Orta, one of northern Italy's best kept secrets. Its capital, Orta San Giulio has a beautiful medieval centre full of cobbled streets, galleries and local crafts. We will take a boat trip from the hotel to explore this charming town. The local market takes place on Wednesdays which is an added treat. The trip will include a visit to Isola San Giulio, said to be one of the most beautiful islands in the world and home to a picturesque monastery. After a lovely trip, you can spend time at leisure back at the hotel before dinner.

Day 5 - The Lakeside Gardens at Villa Taranto

After breakfast, you set off to the west coast of Lake Maggiore for a visit to the Botanical Gardens at Villa Taranto. This is a truly impressive collection of flowering plants, shrubs and trees in a magnificent setting, boasting stunning architecture, fountains and statues. There are many rare species on display and the site is internationally respected and even considered a rival to Kew Gardens. After breathtaking scenery we board the coach and return back to the hotel for dinner.

Day 6 - Lake Lugano

This morning we travel across the border into Switzerland to Lugano, a cosmopolitan city with quaint medieval streets, high end shops, a delightful

promenade and grand gardens to explore, all set in a lakeside resort setting. Time to take in the scenery or maybe take a pedalow out on the lake, or just chill, before we make our way back to our hotel.

Day 7 - Macugnaga & Monte Rosa

Today we take a wonderful scenic drive west to Macugnaga in the North Piedmont region of Italy. Enjoy inspiring mountain scenery and a tapestry of natural landscape. The village itself sits at the base of Monte Rosa- the pink mountain - the second tallest peak in western Europe, and a very popular destination for those passionate about alpine sports. Enjoy more of this beautiful region on your return journey to the hotel followed by dinner beside the serene waters of Lake Orta.

Day 8 - Return to Dijon

After breakfast and cases have been loaded onto the coach, you say farewell to your hosts at the Hotel Giardinetto and head back to Dijon travelling through parts of Italy, Switzerland then into France for your last overnight stop with half board.

Day 9 - Return Home

After an early breakfast we make our way once again through France back to Calais/Dunkirk for our afternoon ferry to Dover. We will have comfort stops en-route to Calais. Arrival time back in our local area should be early to mid evening.

SPECIAL NOTES

- The currency you will need for this tour is the Euro and Swiss Francs.
- Insurance.
- Full Passport.
- An EHIC card (European Health Insurance card).
- Please inform us of any special dietary needs e.g.: Diabetic, gluten free, vegetarian etc.
- Your request is put forward to the hotel, and they will do their utmost to accommodate your needs.
- There is tea/coffee making facilities in the main hotel in Italy.
- To ring back to England, you dial: - +44 then minus the 0 from your code, followed by your number.
- Overnight bags required.
- Program could be subject to alteration.
- Exchange Rate: The price is NOT guaranteed against any alterations as a result of currency fluctuations. We have done our best to calculate in advance.

TOUR INCLUSIONS

- ✓ All coach travel & ferries
- ✓ 6 nights half board
- ✓ 2 overnights half board
- ✓ Portage
- ✓ Excursions & entrances
- ✓ Boats & train trips
- ✓ City tax
- ✓ Courier escorted

TOUR INFORMATION

Duration: **9 Days**

Departure: **Sunday**

Dates: **13 – 21 October**

Meals: **Half board**

Included excursions

TOUR PRICE

Price per person

£989.00

Single room supplement

£120.00 (in dbl/tw room)

(Lake View Supplement:

@ £9pppn in Dbl/Twin)

(Lake View Supplement:

@ £16pn for Single

Occupancy)

Your driver/guide will do their professional best to ensure that you enjoy this tour. It will be at their discretion to rearrange the itinerary to better the tour for your comfort.



5 DAYS
£509

21 - 25 October

Autumn Mystery

YOUR HOTEL - MYSTERY HOTEL

The hotels we use are all well-known and comfortable. All rooms are very comfortable and are en-suite with TV, tea/coffee making facilities. The hotels will look after your every need. The staff are polite and friendly. The hotel also has a bar, lounge and restaurant.

YOUR HOLIDAY CENTRE

Our "Mystery Tour" is very popular, so early booking is essential to avoid disappointment. Our destinations are always a pleasant surprise. These tours represent excellent value for money and accommodation will be of a very high standard. If you haven't yet joined us for a Mystery Tour, then it's time to get on board! On the way to our chosen hotel we stop usually for morning refreshments and somewhere for lunch and arrive at our 'mystery' hotel in plenty of time before dinner. On days 2 - 4, after a leisurely breakfast and usually much discussion about what the day might have in store, we depart for a full day excursion. On the final day, we make our way home via another place of interest. A different experience every time. Could it be country or coastal? Will it be North, South, East or West? We do know you'll be delighted when you get there.

Day 1 - Depart Local Area

After boarding your luxury coach and departing your local area, you start your journey somewhere?

With comfort breaks en-route, you should arrive at the chosen hotel somewhere. Here you will spend the next four nights with dinner, bed & breakfast.

Day 2 - 4 Excursions

The next few days have been tailor made for your enjoyment. Maybe market towns, sandy beaches, fishing harbours, moorland or cliffs. You may see some, all or none of these on your excursions, but you will enjoy them. If there are any entrances, these will be included.

Day 5 - Return Home

After a satisfying breakfast and your cases have been collected, put back on the coach you depart for home. The return journey will take you a different way home. With comfort stops en-route you should arrive at your local pick up point by late afternoon, early evening.

Your driver/guide will do their professional best to ensure that you enjoy this tour. It will be at their discretion to rearrange the itinerary to better the tour for your comfort.

SPECIAL NOTES

- Insurance.
- Please inform us of any special dietary needs e.g.: Diabetic, gluten free, vegetarian etc.
- Special requests are put forward to the hotel, and they will do their utmost to accommodate your needs.
- Itinerary could be subject to change.

TOUR INCLUSIONS

- ✓ All coach travel
- ✓ 4 nights half board
- ✓ Included excursions
- ✓ Courier escorted

TOUR INFORMATION

Duration: **5 Days**

Departure: **Monday**

Dates: **21 - 25 October**

Meals: **Half board**

Included excursions

TOUR PRICE

Price per person

£509.00

Single room supplement

£142.00 (dbl/tw room)





**3 DAYS
£299**

8 - 10 November

A Touch of the Irish Music Weekend in Blackpool

YOUR HOTEL - THE GRAND HOTEL



The Grand Hotel, North Promenade Sea Front, Blackpool, FY1 2JQ
Tel: 0871 222 7768

Formerly the Blackpool Hilton Hotel, the Grand Hotel Blackpool is perfect for a family holiday or a weekend break for couples and offers beautiful views and easy access to popular local attractions such as Blackpool Pleasure Beach. Set on Blackpool's promenade, 1 mile from Blackpool Tower. The Grand Hotel has an indoor pool and modern gym. Take advantage of their health club sauna. (Charges apply)

Soak in the stunning sea views of Blackpool from the comfort of their Promenade Restaurant. Their Lounge Bar is the perfect place to meet up before dinner or enjoy a cheeky drink. All rooms have modern facilities, en-suite bathroom, hairdryer, TV, tea/coffee making facilities, and Free Wi-Fi.

HOLIDAY CENTRE

Hailed as one of the UK's favourite seaside resorts, Blackpool is the perfect destination for all the family. Stroll along the promenade whilst tucking into traditional fish & chips, build sandcastles on the resort's expansive beaches or relax in your deckchair whilst the waves lap against the sand. If you're looking for more of an adrenaline rush, why not visit the iconic Blackpool Tower and brave the SkyWalk? This five-centimetre-thick glass viewing platform allows you to look out into the Irish Sea and see the famous Blackpool Promenade below. On a clear day you can see as far as the Lake District and Liverpool. If you've got the need for speed, venture to Blackpool Pleasure Beach, home to an array of thrilling rides and rollercoaster's like The Big One, which at a nail-biting 235ft, is the UK's tallest rollercoaster!

Day 1 - Depart Local Area

After leaving our local area, we travel direct to Blackpool with comfort stops on the way. Arriving at the Grand Hotel, with time to relax before dinner, and then prepare yourself for the forthcoming Irish Crack. Take your seats in their decorated function room and exchange your vouchers at the function room bar. Get your dancing shoes on and enjoy the variety of foot tapping, sing along Irish music from their special guest entertainers. This could include Barry Doyle.

Day 2 - Day at Leisure

Today you have opportunity of exploring Blackpool by shopping, trying out the thrills and spills of the Pleasure Beach, going up Blackpool Tower and more. This afternoon there will be more Irish music back at the hotel. After dinner there is even more terrific music to enjoy and sing or dance along to. Don't forget your two drinks vouchers you can exchange at the function bar.

Day 3 - Depart for Home

After a traditional farewell breakfast and cases have been loaded, you say farewell to your hosts at the Grand Hotel and return home via the Peak District arriving back to your local area late afternoon early evening.

Your driver/guide will do their professional best to ensure that you enjoy this tour. It will be at their discretion to rearrange the itinerary to better the tour for your comfort.

SPECIAL NOTES

- All rooms have tea & coffee making facilities.
- Your request is put forward to the hotel, and they will do their utmost to accommodate your needs.
- Please inform us of any special dietary needs e.g.: Diabetic, gluten free, vegetarian etc.
- Itinerary could be subject to change.

TOUR INCLUSIONS

- ✓ All coach travel
- ✓ 2 nights half board
- ✓ Entertainment
- ✓ Services of driver/guide

TOUR INFORMATION

Duration: **3 Days**
Departure: **Friday**
Dates: **8 - 10 November**
Meals: **Half board**
Included excursions

TOUR PRICE

Price per person

£299.00

Single room supplement

£60.00



© Flickr - Adam Baker





4 DAYS

from £975

24 - 27 Nov 2024

A Disneyland Enchanted Christmas

YOUR HOTEL - DREAM CASTLE HOTEL



Dream Castle Hotel
40 Av. de la Fosse des Pressoirs, 77703 Magny-le-Hongre, France
Tel: +33 1 64 17 90 00

Your stay is at the 4 star Dream Castle Hotel at Disneyland Paris, sublime French gardens, an enchanting palace, a fairy tale come true... From the romantic walk in the garden where birdsong rustles, nature takes you to the dreamlike interior. Light, gilding, fauna and flora tint with poetry the unforgettable memories that you are about to experience. Enjoy a sumptuous meal in the kitchens of the castle or use the relaxing swimming pool and its spa. Nothing is too beautiful to prolong the dream in your magical rooms. Share a thousand and one emotions during an enchanted parenthesis in the kingdom where splendour and nature coexist in harmony. Free high-speed Wi-Fi, flat-screen TV with free children's channels, tea and coffee tray and room service. Free shuttle between hotel and Disney Parks. All rooms are non-smoking. Your meals are served in the restaurant, on the terrace or to take away.

HOLIDAY CENTRE

Embark on a Christmas voyage to your favourite worlds from the Old West to Galaxies far far away, you'll be transported to the enchanted lands of the stories that you know and love from Disney, Pixar, Star Wars and MARVEL! Make your kids' dreams come true, from special moments with beloved Disney characters, to attractions that will make them beam with delight. Your little ones will revel in the magic of our fairy-tale setting this Christmas, as you all create memories to cherish forever. Take off on a fun-filled adventure with over 50 attractions to enjoy, it's the perfect way to spend an unforgettable pre-Christmas time with friends & family! Thrilling rides such as Big Thunder Mountain, Twilight Zone and Tower of Terror are sure to delight every person in your group! Enjoy selfies galore! Hop on stage with beloved Disney characters or float like a snowflake into the world of Frozen with a voyage to the heart of Arendelle! Heroes and heroines from Disney, Pixar, Star Wars and MARVEL are ready to capture an unforgettable moment with you throughout the Disney Parks this Christmas.

Day 1 - Travel to Disneyland Paris

After boarding your luxury coach, we travel south to Dover with comfort stops en-route, where we will board the DFDS Ferry to Calais. Once in France with comfort stops on route, we will head to The Dream Castle Hotel, Disneyland Paris, where we will spend the next 3 nights with bed & breakfast.

Day 2 & 3 - Disneyland Park

After a delicious breakfast, you can hop on the **FREE** shuttle bus straight to the Christmas magic! or it is just a short walk from your hotel. This morning, make the most of Extra Magic Time, a **PERK** exclusively for Disney Hotel guests. **Both Disney Parks** will be open one hour earlier than general park opening for the public. Ride selected attractions, meet

some of your favourite Disney characters, and get that perfect selfie in front of Sleeping Beauty Castle!

Walt Disney Studios Park

Grab your Mickey ears and get ready for another magical day ahead! Today, head to the Walt Disney Studios® Park where the world of movies and television comes to life before your very eyes. Team up with your favourite Avengers in the brand-new land Marvel Avengers Campus. Use your powers to conquer two thrilling new attractions and take on the mightiest Marvel missions. "Grab a shell dude" and get swept up in a whirlpool of adventure on Crush's Coaster or join Remy and Linguini in the heart of Paris on Ratatouille: The Adventure.

Day 4 - Au Revoir Disneyland Paris

Today enjoy your last breakfast before it's time to check out of your Disney Hotel, with magical Christmas memories to last a lifetime. Got time before your journey back home? Why not get some last-minute souvenirs from the Disney Village before saying "Au Revoir" to Disneyland Paris and heading back through France to Calais where we will board our ferry. We will have comfort stops in France and UK before arriving back home in the evening.

Your driver/guide will do their professional best to ensure that you enjoy this tour. It will be at their discretion to rearrange the itinerary to better the tour for your comfort.

SPECIAL NOTES

- Insurance.
- Please inform us of any special dietary needs e.g.: Diabetic, gluten free, vegetarian etc.
- Special requests are put forward to the hotel and they will do their utmost to accommodate your needs.
- There are tea/coffee facilities in the rooms.
- Itinerary could be subject to change.

TOUR INCLUSIONS

- ✓ All coach travel
- ✓ DFDS ferry
- ✓ 3 nights bed & breakfast
- ✓ 2 day pass to Disneyland Park
- ✓ Services of driver
- ✓ Local door-2-door pick-ups

TOUR INFORMATION

Duration: **4 Days**
Departure: **Sunday**
Dates: **24 - 27 November**
Meals: **Breakfast**
4 Star Dream Castle Hotel

TOUR PRICE

Below are some example price combinations, please call for your perfect holiday.

2 Adults + 2 Children
£1650.00 per room
2 Adults + 1 Child
£1335.00 per room
2 Adults
£990.00 per room
1 Adults + 1 Child
£975.00 per room





4 DAYS
£519

29 Nov – 2 Dec

Belgium Christmas Markets



YOUR HOTEL - HOTEL ALIZE MOUSCRON



Hotel Alize Mouscron
Pass. Saint-Pierre 34, 7700 Mouscron, Belgium
Tel: +32 56 56 15 61

The 4* Hotel & Aparthotel Alize Mouscron features a modern décor and a relaxed atmosphere and is conveniently situated in the city centre of Mouscron, just a few metres from the Grand Place with its many restaurants and beautiful buildings. This hotel has 58 bedrooms all with en-suite bathrooms, a separate toilet, air conditioning, a sitting corner with a large flat-screen TV with English channels and free internet access. It also features free Wi-Fi. The hotel also includes a fitness room and sauna. The breakfast is a buffet. The location offers easy access to surrounding cities. The War Memorials of Ypres are 30 km away. The hotel bar 'Alize' is where you can taste all the traditional Belgian beers (which there are over 200) or try a nice cocktail.

HOLIDAY CENTRE

Mouscron is a Walloon city and municipality located in the western part of Belgium, near the border with France. It is part of the province of Hainaut and has a population of around 58,000 people. The area is known for its textile industry and has several historical sites, including the Castle of Heron and the Church of Saint-Barthelemy. In accordance with the national law, the municipality offers dual language services in French and Dutch. The city substantially grew during the 19th and early 20th century with the development of the textile industry in the north of France. Some of the tourist attractions you can find in Mouscron are:

- Eglise Saint-Barthélemy:** This is the largest church in Mouscron, built in the 19th century in the neo-Gothic style. It is known for its tall bell tower and beautiful stained glass windows.
- Parc du Château:** This is a large park in Mouscron that surrounds a beautiful castle. The park features expansive lawns, gardens, and wooded areas, as well as walking paths and a small lake. It's a great place to relax and enjoy nature.
- Musée de Folklore:** This museum is dedicated to the cultural heritage of Mouscron and the surrounding region. It features exhibits on local traditions, crafts, and folklore, and also hosts events and workshops on these topics.
- La Maison Comtoise:** This is a historic house in Mouscron that dates back to the 17th century. It has been restored and turned into a museum that showcases the life of a typical local family in the 19th and early 20th centuries.
- Les Moulins de la Marlière:** This is a group of windmills in Mouscron that were built in the 18th and 19th centuries. They were used to grind grain into flour and are now a historic landmark.

Day 1 - Depart Local Area

After boarding your luxury coach, we depart our local area, to travel direct to Dover for our morning DFDS ferry crossing to Calais. You will be given a meal voucher for the ferry. We travel through France and into Belgium, with comfort stops en-route, to our hotel Alize in Mouscron, where we will stay for the next 3 nights on half board. There will be a welcome drink on arrival while your cases are taken to your rooms.

Day 2 - Bruges Christmas Market

The romantic city of Bruges has one of the most beautiful Christmas markets in Europe and you are guaranteed to

fall under its spell during your visit.

The historic city centre of Bruges will be transformed into a giant Christmas market. The main market is situated in Grote market, which is surrounded by wooden chalets and centred by a beautiful ice rink. Other markets are situated around this peaceful city with unique traders offering all manner of festive foods and goods.

Day 3 - Lille Christmas Market

Come to Lille's Christmas market to discover the lights and decoration of the city, marvellous stalls but also the magic of the "Grande Roue" at the heart of the Grand Place. When you reach the Grand Place, Christmas

carols fill the air as the 50-metre high Big Wheel turns majestically, providing its guests with an incredible view of the city. At its base, is a reproduction of a snow-covered village. Shop windows and display also are part of the ambiance. The whole city is full of colour and happiness. Follow the irresistible aroma of cinnamon and roasted chestnuts to Place Rihour where you can find more than 80 decorated chalets. Here, merchants and craftspeople offer original and delightful gift ideas: regional products, gingerbread and other delicacies (to try on the spot or take away), nativity figurines and Christmas decorations or traditional toys.

SPECIAL NOTES

- Currency for this tour is the Euro.
- Full valid Passport.
- Insurance.
- To phone back to England: +44 then leave off the zero of your STD code then the number.
- There are tea/coffee making facilities in the rooms.
- Special requests are put forward to the hotel, and they will do their utmost to accommodate your needs.
- You will need a European Visa from January 2024 https://travel-europe.europa.eu/etias_en
- Itinerary could be subject to change.

TOUR INCLUSIONS

- ✓ All coach travel
- ✓ Ferries
- ✓ Portage
- ✓ Welcome drink
- ✓ 3 nights half board
- ✓ Christmas markets
- ✓ City Taxes
- ✓ Courier escorted

TOUR INFORMATION

Duration: **4 Days**
Departure: **Friday**
Dates: **29 Nov – 2 Dec**
Meals: **Half board**
Included excursions

TOUR PRICE

Price per person

£519.00

Single room supplement

£80.00



Day 4 - Depart for Home

After breakfast and all cases have been loaded onto the coach, we say farewell to our host at the Alize Hotel, and head back to Calais for our afternoon DFDS ferry crossing to Dover. You will be given meal vouchers again for the ferry. We should arrive back in our local area early evening.

Your driver/guide will do their professional best to ensure that you enjoy this tour. It will be at their discretion to rearrange the itinerary to better the tour for your comfort.



5 DAYS
£519

2 - 6 December

A Taste of Christmas



YOUR HOTEL - CLIFTON PARK HOTEL



Clifton Park Hotel
299/301 Clifton Drive South, St Anne's on Sea, Lytham St Anne's, Lancashire, FY8 1HN
Tel: 01253 725801

The Clifton Park Hotel exceeding expectations is fast becoming a hotel renowned for its superior quality and exemplary service. Located centrally in the traditional seaside town of St. Anne's on Sea, this popular hotel provides comfort and hospitality to every guest. From the moment you enter their dedicated team of staff will attend to your every need. All rooms are tastefully decorated with en-suite facilities, colour television, direct dialled telephones, thermostatically controlled heating and your own tea and coffee making facilities. A lift serves all floors. The impressive foyer area has a classical French feel throughout. Relax in the comfortable mezzanine or sun lounge whilst enjoying a drink from the Orchard Bar. The impressive garden restaurant with its comfortable warm atmosphere serves breakfast, lunch and dinner. Further facilities include lounges, a fabulous ballroom, landscaped gardens and a superb leisure centre, at the heart of which is a stunning indoor pool and spa (Jacuzzi).

HOLIDAY CENTRE

St. Anne's on Sea gives the gentle feel of a bygone age and is slowly being supplemented with an exciting range of new shops and restaurants, providing a welcome contrast to its neighbour, Blackpool. St. Anne's is a haven of tranquillity with four championship golf courses on the doorstep. The promenade of Blackpool is only minutes away, with a vast array of amusements, shops, piers, and of course, the 'Blackpool Tower', there is a lot to offer to people of all ages.

Christmas Eve

Home to Lytham St Annes:

Christmas Eve

After leaving our local area, we travel direct to Lytham St. Anne's with comfort stops on the way. Arriving at the hotel, time to relax and prepare yourself for the forthcoming frivolities.

6:00pm The bar is open so come and join your hosts and meet some of your fellow guests.

7:00pm Welcome dinner, setting the tone for the week ahead freshly prepared by the chefs de cuisine in the ballroom.

Relax with coffee in the lounge

9:00pm Cabaret entertainment in the ballroom.

11:00pm A goodnight glass of sherry and homemade mince tarts.

*Hope that Santa doesn't get stuck
Go and hang that stocking up!!!*



Christmas Day

A crisp winter morning awaits - and have you had a visit from Santa???

8 - 9:30am Great traditional English breakfast.

Followed by a brisk walk on the Promenade???

11:00am Morning coffee and traditional Christmas carols in the lounge. Enjoy your morning, explore the promenade.

12:00pm Let the festive spirit come alive with a Christmas sing-along in the lounge.

12:30pm Traditional Christmas luncheon and the grand arrival of Father Christmas. Followed by warm mince pies & coffee in the lounge.

4:00pm ...if you can manage it... tea and Christmas cake served in the Lounge.

7:00pm Christmas Day carvery buffet. A delicious selection of home roasted meats & poultry, tasty salads and homemade sweets from the patisserie. Something to tickle those taste buds, all beautifully displayed, so bring your camera!!!

The evening continues with live entertainment.

And so, to bed you sleepy heads.

Boxing Day

8 - 9:30am Great traditional English breakfast.

11:00am Morning coffee & chat in the lounge.

12:30pm Traditional Boxing Day luncheon.

3:30pm Bingo.

4:30pm Tea/coffee & biscuits.

7:00pm Boxing Day carvery buffet.

9:00pm And so the evening continues with Cabaret entertainment.

Thursday The Grand Finale.

8 - 9:30am Great traditional English breakfast.

11:00am Morning coffee & chat in the lounge.

12:30pm Light finger lunch served in the lounge.

4:00pm Tea/coffee & biscuits & Bingo.

7:00pm Le Grand Farewell Dinner & Chefs Parade!!!

This is a must for your camera so save

SPECIAL NOTES

- All rooms have tea & coffee making facilities.
- Dinner is at 7:00pm every evening (subject to change).
- Your request is put forward to the hotel, and they will do their utmost to accommodate your needs.
- Please inform us of any special dietary needs e.g.: Diabetic, gluten free, vegetarian etc.
- Itinerary could be subject to change.

TOUR INCLUSIONS

- ✓ All coach travel
- ✓ 4 nights full board
- ✓ Full entertainment program
- ✓ Swimming pool
- ✓ Jacuzzi
- ✓ Courier escorted

TOUR INFORMATION

Duration: **5 Days**

Departure: **Monday**

Dates: **2 - 6 December**

Meals: **Full board**

TOUR PRICE

Price per person

£519.00

Single room supplement

£Nil

your film. The Clifton Park Hotel is proud to present the chefs de cuisine in the Snowman Parade.

8:30pm The Great Fancy Dress Parade (Costumes available outside the swimming pool).

9:00pm Cabaret entertainment in the Ballroom.

11:00pm Champagne & shortcake biscuits.

Join us for a glass of bubbly!!!

And when the dancing is done

Let's drink a toast to everyone

And may our message sound quite clear

We'll meet again same spot next year

Friday Goodbye & home.

8:00am Cases out for the trip home.

8 - 9:30am Great traditional farewell English breakfast.

We say farewell to our hosts at the Clifton Park Hotel and return home via the Peak District arriving back to your local area early evening.

Your driver/guide will do their professional best to ensure that you enjoy this tour. It will be at their discretion to rearrange the itinerary to better the tour for your comfort.



5 DAYS
£599

23 - 27 December

Christmas in Yorkshire

YOUR HOTEL - CEDAR COURT HOTEL



Cedar Court Hotel
Ainley Top, Lindley Moor Rd, Elland, Huddersfield HD3 3RH
Tel: 01422 375431

The 4* Cedar Court Hotel is a great choice for a stay in Huddersfield, and they offer a friendly welcome. There is free Wi-Fi available throughout the hotel. The hotel's restaurant prides itself on sourcing their ingredients locally and using as much Yorkshire products as possible. They have also partnered up with many local distilleries (gin in particular), beer microbreweries and soft drink makers to offer their guests a great taste of Yorkshire in a glass. All 113 guest rooms have en-suite with free toiletries, and hairdryer. A luxurious 2000 pocket sprung mattress for a good night's sleep, TV, refreshment tray, ironing facilities, trouser press and direct dial telephone. Guests can visit the fitness centre for a workout. Other highlights at this upmarket hotel include a bar, lounge, a snack bar and deli.

HOLIDAY CENTRE

Yorkshire, is an historic county of England, in the north-central part of the country between the Pennines and the North Sea. Yorkshire is England's largest historical county. It comprises of four broad belts each stretching from north to south: the high Pennine moorlands in the west, dissected by the Yorkshire Dales; the central lowlands—including the Vale of York—draining into the Humber estuary in the southeast; the North Yorkshire Moors and Yorkshire Wolds in the east; and, in the far southeast, the Holderness plain along the North Sea. Yorkshire entered the Industrial Revolution as a centre of woollen textile manufacturing in the towns of Leeds, Bradford, Halifax, Wakefield, and Huddersfield, where rivers flowing from the Pennines provided both waterpower and a means of transport to the seaport of Kingston upon Hull.

Day 1 - Depart Local Area

Departing our local area, we travel north to the market town of Chesterfield, that features the church with the twisted spire. We will stay here for lunch and a little sightseeing, and then we will continue on to our hotel in Huddersfield for the Christmas celebration, and here we will spend the next 4 nights with dinner bed & breakfast. On arrival you will receive tea/coffee, glass of sherry and mince pies while your cases are taken to your rooms.

Day 2 - Worth Valley Railway

After breakfast we make our way to Oxenhope station for our Elf Explorer journey to Keighley and return. The Keighley and Worth Valley Railway is well-known as 'The Railway Children Line' since being thrust into the limelight in the 1970s when Lionel Jeffries selected the railway to be the backdrop for his adaption "The

Railway Children". This launched the railway onto the big screen over 50 years ago, with iconic scenes along the Worth Valley with the paper chase at Mytholmes Tunnel and Oakworth Station. We rejoin our coach at Oxenhope station and return back to our hotel for a festive afternoon tea. There will also be a festive quiz with host. There will be a Christmas Banquet Dinner with vegetarian option, followed by tea/coffee. Later there is Christmas carols with mulled wine, tea/coffee and mince pies.

Day 3 - Christmas Day

After a full English breakfast, there will be time to relax or use the facilities in the hotel, (fully equipped gym - weights, cardio, stretching) before our 4 course Christmas Day lunch with all the trimmings, including hats and crackers. During the Kings speech, tea/coffee and Christmas cake will be served. (This will be served in a

separate room at 3pm prompt). This evening will be a Christmas buffet dinner with vegetarian option - hot fork buffet with desserts followed by tea/coffee, from 6pm onward. Followed by some entertainment (bingo).

Day 4 - Boxing Day

Today we have the opportunity of going to a Pantomime somewhere "Oh no we don't - Oh yes we do". This evening's dinner will be followed by entertainment of a quiz night.



SPECIAL NOTES

- Insurance.
- Please inform us of any special dietary needs e.g.: Diabetic, gluten free, vegetarian etc.
- Special requests are put forward to the hotel, and they will do their utmost to accommodate your needs.
- Itinerary could be subject to change.

TOUR INCLUSIONS

- ✓ All coach travel
- ✓ 4 nights half board
- ✓ Excursions
- ✓ Train ride
- ✓ Panto
- ✓ Entertainment
- ✓ Courier escorted

TOUR INFORMATION

Duration: 5 Days
Departure: Monday
Dates: 23 - 27 December
Meals: Half board
Included excursions

TOUR PRICE

Price per person

£599.00

Single room supplement

£68.00 (Dbl/Tw for sole

Occupancy)



Day 5 - Depart for Home

After breakfast and the cases have been loaded onto the coach, we say farewell to our hotel and head for home. We will have a break at Downtown for lunch before we continue our journey home, arriving in your local area by early evening.

Your driver/guide will do their professional best to ensure that you enjoy this tour. It will be at their discretion to rearrange the itinerary to better the tour for your comfort.



Happy New Year

4 DAYS

£469

30 Dec-2 Jan 2025

A Cornish New Year

YOUR HOTEL - ROSEMUNDY HOUSE HOTEL



Rosemundy House Hotel, St Agnes, Cornwall, TR5 0UF

Tel: 01872 552101

The hotel has been a favourite of ours since we first visited in the year 2000. This very private hotel has been family run for years and has a very relaxing and comfortable air about it.

Beautiful quiet lounges for relaxing, superb Tom Noggi Restaurant with excellent cuisine, well equipped comfortable bedrooms with bath or shower. Set in its own grounds in the centre of

St. Agnes. The village is set back from the cliffs by $\frac{3}{4}$ mile; Trevaunance Cove is the nearest thing to a sheltered harbour that this inhospitable coast affords. Strewn with old mine workings, copper and tin ore were once shipped from the cove.

HOLIDAY CENTRE

Tucked into a stunning and unspoilt spot on the coast, St. Agnes sits in both a designated "Area of Outstanding Natural Beauty" and a "World Heritage Site". St. Agnes is a picturesque village on the north coast of Cornwall. Steeped in mining history, the village retains a traditional friendly Cornish atmosphere and makes a wonderful base for a holiday, with four different beaches. There are dramatic coastal walks and breathtaking scenery filled with relics from the past, including the iconic Wheal Coates engine house. You will discover a thriving community with a choice of shops as well as galleries and craft workshops where beautiful gifts are made by hand. Sample the beautiful scenic coastline, fantastic beaches, arts and craft shops and mining heritage.

Day 1 - Depart for Cornwall

After boarding your luxury coach, your New Year vacation has now started. You start your journey by travelling westward with stops en-route for lunch. Continuing your journey through beautiful countryside, to the Cornish town of St. Agnes and the Rosemundy House Hotel. Here you will stay for the next three nights with half board and entertainment, to see in the New Year 2024/25. This evening there will be a sherry reception prior to your evening meal at 7pm, followed by a cabaret artist.

Day 2 - Truro

Breakfast will be served between 8am & 9am. We then set off for Truro, Cornwall's administrative capital and Cathedral City. Centre stage is Truro Cathedral with its impressive gothic towers dominating the skyline. In its shadow, a warren of compact streets is home to an impressive array of independent traders. From boutiques to bookshops and designer interiors to delicatessens, this great little city

offers a unique shopping experience.

The café culture is pretty impressive too, with hip coffee houses, artisan ice creameries and cocktail bars dotted across the centre. Also enjoy the Christmas decorations around the city. A sparkling Wine Gala Dinner will be served at 7pm followed by entertainment, then fireworks at midnight.

Day 3 - Day at Leisure

Welcome in 2025 with a hearty breakfast, we will allow you a little lay in and delay breakfast 9am - 10am just in case one or two of you have a headache. Take advantage of exploring this beautiful area of St. Agnes or take a walk down to the harbour, but it can be a bit steep for some. Dinner will be served at 7pm followed by entertainment.

Day 4 - Depart for Home

After a hearty breakfast and cases have been loaded onto the coach, it is time to say farewell to your hosts at the Rosemundy House Hotel.

Retracing your steps, with comfort stops en-route. You will arrive in your local area late afternoon, early evening.

Your driver/guide will do their professional best to ensure that you enjoy this tour. It will be at their discretion to rearrange the itinerary to better the tour for your comfort.

SPECIAL NOTES

- Insurance.
- Please inform us of any special dietary needs e.g.: Diabetic, gluten free, vegetarian etc.
- Special requests are put forward to the hotel, and they will do their utmost to accommodate your needs.
- Itinerary could be subject to change.

TOUR INCLUSIONS

- ✓ All coach travel
- ✓ 3 nights half board
- ✓ Excursions
- ✓ Entertainment
- ✓ Courier escorted

TOUR INFORMATION

Duration: 4 Days

Departure: Monday

Dates: 30 Dec-2 Jan 2025

Meals: Half board

Included excursions

TOUR PRICE

Price per person

£469.00

Single room supplement

£Nil





RB Travel, Isham Road, Pytchley, Kettering,
Northants NN14 1EW

Tel: 01536 791066 option 2

Email: taurus@rbtravel.co.uk

Website: www.taurusholidays.co.uk

DEPARTURE DATE:

NUMBER OF DAYS:

TOUR TITLE:

SPECIAL REQUESTS:

DISABILITIES: (wheelchairs, walkers or mobility scooters)

CLIENTS & ROOMING DETAILS

MR/MRS/ MISS	INITIALS	SURNAME (PERSON SIGNING BOOKING FORM FIRST)	DATE OF BIRTH	TWIN/DOUBLE/ SINGLE	BOARDING POINT

INSURANCE: (if you would like our insurance Form (please tick here) ☐)

PAYMENT DETAILS

HOLIDAYS Deposit: Up to 5 days

£40 per person

£ _____

HOLIDAYS Deposit: Over 5 days

£50 per person

£ _____

CRUISES Deposit: All Cruises 10% of Total Cruise Price

£ _____

FULL PAYMENT £ _____

TOTAL SUM ENCLOSED: £ _____

Please make all cheques payable to: RB Coach Travel Ltd



CLIENTS NAME & ADDRESS

NAME:

ADDRESS:

POSTCODE:

TEL NUMBER HOME:

TEL NUMBER WORK:

PASSPORT NO. (CONTINENTAL TOURS ONLY):

DATE OF BIRTH:

SIGNATURE:

Important: Signed booking form must accompany every booking

Taurus Holidays Trading Charter (& Booking Conditions)



1. Financial Protection

Your contract is with R B Coach Travel Ltd of Pytchley, Kettering, NN14 1EW.

When you book a holiday with us, which does not include a flight, the money you pay us for booking will be protected by Bonded Coach Holidays (BCH) and the Association of Bonded Travel Organisers Trust Ltd (ABTOT); this is a government approved consumer protection scheme. The scheme will also ensure your repatriation in the event the company becomes insolvent. Our trading charter and booking conditions set out clearly and simply the responsibility we have to you and in turn, you have with us, when a contract is made. Please see the Consumer Guarantee at <https://www.abtot.com/bch-abtot-members-directory/> There is no financial protection if you purchase just transport or accommodation – only from us. We fully comply with the Package Travel and Linked Travel Arrangements Regulations 2018. The combination of travel services offered to you is a package holiday within the meaning of the Regulations. Therefore, you will benefit from all rights applying to package holidays. R B Coach Travel Ltd will be fully responsible for the proper performance of the holiday and providing assistance if you are in difficulty. Your key rights will be in the details of the tour which will be provided prior to booking.

2. Booking & Payment

When a booking is made, the 'lead name' on the booking guarantees that he or she is 18 or over and has the authority and accepts on behalf of the party the terms of these booking conditions and pays a deposit indicated in the brochure and as confirmed in the pre-contract information. After we receive your booking and all appropriate payments, if the arrangements you wish to book are available, we will send you a confirmation invoice within 14 days. This confirmation will include any special requests we have agreed. A binding agreement will come into existence between us when we dispatch this invoice to the 'lead name'. Please check the confirmation carefully to ensure all the information is correct. This contract is governed by English Law, and the jurisdiction of the English Courts. Single occupancy of rooms, when available, may be subject to a supplementary charge and these will be shown in the brochure. You can book by paying a deposit for each person named on the booking, but our commitment is always conditional on the balance being paid as below.

Deposit: £40 up to 5 days, £50 over 5 days. Per person.

The balance of the price of your holiday must be paid at least 8 weeks before your departure. If you book within our balance due period, you will need to pay the total holiday cost at the time of booking. If the balance is not paid in time, we reserve the right to cancel your holiday, retain your deposit, and apply the cancellation charges set out in the paragraph below. The date of cancellation will normally be the date we receive your written confirmation that you intend to cancel or 15 days after the balance due date, whichever comes first.

Where optional items are purchased as part of the holiday, these are payable on the balance due date except where items, such as theatre tickets, have been specifically purchased for you. In this case the cost will be payable at a separate date notified to you and will not normally be refunded unless we obtain a refund from the supplier we use.

3. Brochure Accuracy

Although "R B Coach Travel Ltd" make every effort to ensure the accuracy of the brochure information and pricing, regrettably errors do sometimes occur. You must therefore ensure you check the price and all other details of your holiday with us at the time of booking and when you receive our confirmation invoice.



4. Our Pricing Policy

"R B Coach Travel Ltd" endeavour to ensure that the most up to date and correct prices are shown in our brochure. Occasionally, an incorrect price may be shown, due to an error. When we become aware of any such error, we will endeavour to notify you at the time of booking (if we are then aware of the mistake) or as soon as reasonably possible. We reserve the right to cancel the booking if you do not wish to accept the price which is applicable to the holiday. Local Authorities in many towns and cities throughout Europe have introduced new tourist taxes which must be paid directly to the hotel by all guests in person. These taxes are not included in our prices, but we will notify you when applicable. Holiday prices include all travel, hotel accommodation and meals as specified in the holiday description and VAT payable in the UK where applicable. The price of the holiday will not be subject to any surcharges except those arising from exchange rate changes, transportation including the price of fuel, air and ferry operator fares and tolls, embarkation or disembarkation fees at terminals, duties and taxes (including the rate of VAT). Even in these cases we will absorb the cost equivalent or cost of the first 2% of the holiday price. Amounts more than this plus £1 administration fee will be surcharged to you. If this means the total cost of the holiday increases by more than 8% then you are entitled to cancel your holiday and receive a full refund of all monies paid. We will communicate the options with you either through email or letter, with a reminder if necessary. If you exercise the right to cancel, we must receive written notice within 20 days of the date of the surcharge invoice. The currency exchange rate used in the holiday costing are based on rates as at the time of printing of this charter.

5. If You Change Your Booking

If after confirmation has been issued, you wish to change to another of our holidays, or change departure date, we will do our utmost to make changes, but we cannot guarantee to do so. Provided that written notification is received from the person who signed the original Booking Form, no later than the date on which the balance of the original holiday cost was due for payment. Any alteration by you made later than the original balance date will be treated as a cancellation of the original booking and will be subject to the cancellation charges set out below. Other alterations such as the addition of requests or changes of pick up points that require a re-confirmation to be issued must be notified, at admin cost of £20.

6. Transferring Your Booking

You can transfer your booking to somebody else, but the person must satisfy all the conditions of the holiday and you must inform us either by letter or email no less than 7 days before departure. This transfer will cost (because of name change) £20 plus reasonable costs to make the transfer. You will remain responsible for ensuring payment before the balance due date. This is in addition to (and does not affect) the separate liability of the transferee to us.

7. If You Cancel Your Holiday

You or any member of your party may cancel your holiday at any time provided that the cancellation is made by the person signing the Booking Form and is communicated to us in writing via the office at which you made your booking. As this incurs admin costs, we will retain your deposit and, in addition, apply cancellation charges to cover our administration costs and to compensate for the risk of us not re-selling the holiday. If the holiday is re-sold a refund will be made. Your cancellation will take effect from the date on which we receive your written confirmation of your cancellation. You must also return any tickets or vouchers you have received. A reduction in room occupancy may increase the charges for the remaining passengers by the application of supplements for low occupancy of rooms. Where bought in supplies such as ferries, hotel accommodation etc have been bought in on your behalf, and where the terms and conditions of the supplier are non refundable, these products will be charged to you at the full retail rate. If this applies, the non refundable items will be deducted from your holiday costs and the following scale of charges will be applied to the remainder.

Period before departure	Amount of cancellation charge show as % of holiday price
Within which written Cancellation is required	
More than 64 days	Deposit
64 days to Departure	100%

Note If the reason for cancellation is covered under the terms of an insurance policy, you may be able to reclaim these charges.

8. Alterations To Your Holiday By Us

The arrangements for holidays are made many months in advance and changes are sometimes unavoidable. Most of these changes may be very minor but where they are significant we will notify you as soon as is reasonably possible before your departure date. A significant change would be recorded as changes in the departure date, departure point, or resort area, reducing the quality of your main hotel (not single overnight hotels on touring holidays) or a change of tour itinerary which involves a destination being completely eliminated from the revised itinerary or reducing the specification on the coach.

In the event of a significant change you may decide to:

If We Change Your Holiday

- a) Continue with the "holiday" as amended
- Or b) accept an alternative holiday which we may offer you
- Or c) cancel your booking

If you choose (a) or (b) we will transfer your holiday to another. If you choose (c) we will refund all monies paid by you.

9. Our Responsibilities to You

We accept responsibilities for ensuring the holiday which you book with us is supplied as described in our publicity material and the service offered reach a reasonable standard and if you are in difficulty, we will assist you. If any part of our holiday contract is not provided as promised, you may terminate the contract without paying a termination fee and we will pay you appropriate compensation if this has effected your enjoyment of your holiday. We will, however, not be liable if there are any unforeseeable or unavoidable actions of a third party not connected with our travel services, or there were unavoidable or extraordinary circumstances, or the lack of conformity is due to a traveller in the party. We accept responsibility for the acts and/or omissions of our employees, agents and suppliers except where they lead to death, injury or illness. Our liability in all cases shall be limited to a maximum of twice the value of the original holiday cost (not including insurance premiums and amendment charges). We accept responsibility for death, injury, or illness caused by the negligent acts and/or omissions of our employees or agents together with our suppliers and sub-contractors, servants and/or agents of the same whilst acting within the scope of, or during their employment in the provision of your holiday. We will accordingly pay to our clients such damages as might have been awarded in such circumstances under English Law. In respect of carriage by air, sea, tunnel and rail and the provision of accommodation our liability in all cases will be limited in the manner provided by the relevant international convention. If we make any payment to you or any member of your party for death or personal injury or illness, you will be asked to assign to us or our insurers the rights you may have to act against the person or organisation responsible for causing the death, personal injury or illness. This clause does not apply to any separate contracts that you may enter for excursions or activities during or outside of your holiday. If you or any member of your party suffer death, illness or injury whilst overseas arising out of an activity which does NOT form part of your holiday, we may offer guidance and where legal action is contemplated and you want our assistance, you must obtain our written consent prior to any proceedings (We limit the cost of our assistance to you or your party to £5,000 per party)

10. If You Have A Complaint

If you have a problem during your holiday, please inform your Tour Manager, your driver or the relevant supplier/resort representative immediately who will endeavor to put things right. If your complaint cannot be completely resolved locally, you must complete a Holiday Report Form which can be obtained by your Tour Manager/Driver or local representative, which you should keep. Our contact number, for unresolved complaints will be our office number on +44 01536 791066 (open in office hours) if you remain dissatisfied please follow this up within 14 days of your return home by writing to RB Coach Travel Ltd giving your original booking reference number and all other relevant information, including the reference of the Holiday Report Form. It is therefore a condition of this contract that you communicate any problem to the supplier of the services in question AND to our representative whilst in resort and obtain a written report form. If you fail to follow this simple procedure, we cannot accept responsibility as we have been deprived of the opportunity to investigate and rectify the problem. Should you wish to pursue the complaint further, BCH ABTOT have an Alternative Dispute Resolution scheme and full details are available from them. Please contact them at ABTOT 7th Floor 69 Leadenhall Street London EC3A 2BG.

11. Our Coaches

We will always use our reasonable endeavors to provide a coach to the specification in our brochure or advert but reserve the right to substitute an alternative vehicle should there be unforeseen circumstances. There is a seating plan, but in some cases,

operational reasons may require a coach with different configuration. We reserve the right to alter a coach seating plan and allocate seats other than those booked. Single passengers may be required to share a double seat with other single passengers. When your booking is confirmed, you will be offered the best seats that are available at that time. If you feel you require two seats, then these must be booked and paid for in advance, at the time of booking. If you fail to do this and it transpires that the seat allocation to you is insufficient for your need and there is no alternative seating available, then you will be refused access to the coach and any payments made will be liable to forfeiture. Specific seats will not be allocated on coaches operating a feeder service between joining points and main holiday departure points or on coaches that carry out transfers between airports, seaports etc.

12. Hotel Facilities

Some hotel facilities and entertainment may be withdrawn for routine maintenance or be subject to seasonal availability and provision of the facilities cannot be guaranteed. Single occupancy of rooms may be subject to a supplementary charge.

13. Health & Safety

In some foreign countries, standards of infrastructure, safety and hygiene may be lower than those to which we are accustomed in the UK. You should therefore exercise greater care for your own protection. There may be countries that we visit that have special medical requirements for tourists, these regulations are subject to change and our clients are responsible for complying with entry and current health requirements. If you are not sure of the health requirements for the country you are visiting, you are advised to check with your own GP before traveling. You are also advised to refer to the Department of Health leaflet "Health Advice for the Travelers".

Some people may be at risk from discomfort or deep vein thrombosis (DVT) if they remain immobile on a journey for a long period. If you are planning to undertake a journey of more than three hours, you should consult your doctor, if you have ever had DVT, pulmonary embolism, a family history of clotting conditions, cancer or treatment for cancer, stroke, and heart or lung disease or if you have had major surgery in the past three months. We reserve the right to refuse any booking in the absence of a doctor's certificate confirming that you are fit to travel. Where we provide comfort stops you are encouraged to walk around. Exercise reduces any discomfort, which may be caused by periods of immobility.

NO SMOKING is allowed on our coaches (including E-Cigarettes) and we do not allow pets or any other animals, although we accommodate registered assistance dogs, but not on overseas holidays.

14. Travel Documents, Itineraries, Pick-up Points & Passports

For all continental holidays, you will require a full 10 year British Passport (machine readable) valid for a further 6 months after your holiday. If you do not hold a full British Passport or have any doubts about your status as a resident British subject, you must check with the Embassies or Consulates of the countries to be visited to confirm the Passport or visa requirements when you book. We cannot accept responsibility if passengers are not in possession of the correct travel documents. For full details on passport requirements, please contact 'the identity and passport

service' on 0300 222 0000 (www.direct.gov.uk)

In relation to holidays in the European Union or a requirement to travel through an EU Member State, you are responsible to ensure that you have any necessary entry documents as required by the EU including any required compliance with the EU's 'ETIAS' system, for more information on which see www.etiasvisa.com. For more information on which see www.etiasvisa.com. For travel in the European Union or Schengen area a valid General Health Insurance Card (GHIC) is required. Available free of charge from the NHS and valid for 5 years <https://www.nhs.uk>

We cannot accept any liability for the consequences of your failure to do so. You are responsible for ensuring you are at the correct departure point, at the correct time and with the correct documents. R B Coach Travel Ltd reserves the right to modify itineraries to conform with requests from competent authorities both within the UK and abroad. Excursions which are included in the cost of your booking are detailed on the brochure page and refunds will not be made for excursions not taken. Optional excursions booked and paid for in resort do not form part of your booking. Admission fees to buildings may not be included in the price of the holiday, please check.

15. Special Requests

All special needs and requests if agreed, should be entered on the booking form and be included in the confirmation of the holiday. These cannot be guaranteed except where confirmed as part of our holiday commitment to you and are detailed on your holiday booking confirmation. We are keen to ensure that we plan the arrangements for your holiday so that special needs and requests can be accommodated as far as possible. If you will need assistance or may be unable to fully enjoy all aspects of your holiday you must tell us in advance so that we can maximize your enjoyment of the holiday. We will need to know if you will need special facilities in the hotel, taking part in the excursions or have difficulty boarding and travelling on the coach or other means of transport. Before booking your holiday, you should be sure that you and your party are both physically and mentally capable of completing the itinerary, if you need advice or further information either you or your booking agent should contact 01536 791066. If you require a special diet please tell us at the time of booking, or as soon as you are medically advised, together with a copy of the diet.

16. Passengers with Disabilities

We want everyone to enjoy our travel arrangements. We are happy to advise and assist you in choosing a suitable holiday. But, as some of the accommodation and resorts featured may not cater for even minor disabilities, it is important that, when booking, you advise us of any disability, specific need or complex need you may have and any special requirements that will make sure the holiday is suitable. If a passenger requires special assistance (for example, assistance with feeding, dressing, toileting, mobilizing) then this passenger must travel with an able-bodied companion or carer and written confirmation that such assistance will be provided for the entirety of the holiday is required at the time of booking. Coach drivers/Tour Managers are unable to provide such assistance.

Important

You must tell us if you have an existing medical condition, disability or complex need that may affect your holiday or other group members' enjoyment of it before you book your holiday. We



reserve the right to request a doctor's certificate confirming the passenger is fit to travel. If, in our reasonable opinion, your chosen holiday is not suitable for your medical condition or disability, we reserve the right to refuse your booking. You are responsible for bringing with you the proper clothing and equipment, which we advise you about in our printed trip information. We want you to enjoy your holiday and will help you select an appropriate trip.

17. Passenger Behavior

We want our passengers to have a happy and carefree holiday. You are responsible for your behavior and hygiene and the effect it may have on others. If you or any other member of your party is abusive, disruptive or behaves in a way that could cause damage or injury to others or affect their enjoyment of their holiday or which could damage property, we have the right to terminate your contract with us and we will have no further liability or obligation to you. The coach driver/Tour Manager or authorized official is entitled to refuse you boarding if in their reasonable opinion you are unacceptable under the influence of drink or drugs or you are being violent or disruptive. If you are refused boarding on the outward journey, we will regard it as a cancellation by you and we will apply cancellation charges. If on your return journey, we have the right to terminate the contract with you. We also request that mobile telephones are not used on the coach.

18. Travel Insurance

We strongly advise that you take out personnel travel insurance for the trip. We have arranged travel insurance with "P J Hayman" which is outlined below. You may use an alternative insurer, but you must advise us. The insurance should cover medical and repatriation costs, personal injury, loss of baggage and cancellation charges. If you do not have adequate insurance and require our assistance during your holiday, we reserve the right to reclaim from any medical repatriation or other expenses which we may incur on your behalf which would otherwise have been met by insurers. You must advise us if you use an alternative insurer, the policy number and 24-hour contact number.

19. Luggage

Please restrict your luggage to a suitcase weighing no more than 20 kgs per person. We cannot accept responsibility for loss or damage to luggage unless through our negligence. Please do not leave valuable items in your suitcase when left on the coach. Please contact us for our policy on mobility scooters.

20. General Data Protection Regulations

We comply with the GDPR 2018 Regulations, our data controller is Mr Symon Dawson and our data protection policy is available on request.

21. Emergency Contact

Our emergency contact details are Tel: 01536 791066

Publication Date October 2023

SUMMARY OF COVER

Selection & Cover	Benefit (up to)	Excess
Cancellation Loss of Deposit	£1,500	£60
Travel Delay-Delayed Dept Abandonment	£60 (£20 first full 12hrs/£10 each Extra 12hrs £1,500(after 12hrs) £60	Nil
Missed Departures	£100 England Scotland Wales £300 N Ireland Isles Scilly, Channel Isles I.O.M & Europe	Nil
Personal Accident	£10,000 (Subject to age limits)	Nil
Medical & Other Expenses (including Curtailment & Repatriation)	£1,000,000 - outside the UK medical (emergency dental treatment limited to £350), additional travel, accommodation & repatriation expenses if you are hospitalized Or have to stay beyond your return date (trips solely within the UK are limited to 31,500 And to £300 for additional travel expenses)	£60
Funeral Expenses Abroad	£1,000	
Taxi Fares & Telephone calls	£100	
Hospital Benefit - Trips solely within UK	£15 each 24hr period, max £450 £10 each 24hr period, max £100	Nil Nil
Personal Property Single Item, pair or set Valuable limit	£1,500 £200 £200	£60
Delayed Baggage	£100	Nil
Personal Money	£200	£60
Children aged under 16	£50	
Loss of Passport Expenses	£200 including loss or theft of visa	Nil
Personal Liability	£1,000,000	Nil
Legal Costs & Expenses	£25,000	Nil

Taurus Holidays



Taurus Holidays

www.rbtravel.co.uk



Tel: 01536 791066

Email: enquiries@rbtravel.co.uk

RB Coach Travel Ltd (Trading as Taurus Holidays)
Isham Road, Pytchley, Kettering, Northamptonshire NN14 1EW